

rtc
COUPLING TECHNOLOGY
www.rtc-tec.com



ACCESSORIES



rtc TYPE BC

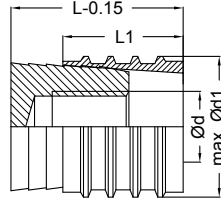
rtc type BC

Threadless Pressure Plug - Verschlussstopfen ohne Gewinde

Interchangeability - Austauschbar mit HASCO Z 942

1 - Material: MS58 Brass - Messing

2 - Material: Stainless Steel - Edelstahl



Order No / Bestellnr.	Ød	Ød1	L	L1	Package Pcs. Verpackungseinheit
BC - 06	M3	6	11.5	8	25
BC - 07	M3	7	11.5	8	25
BC - 08	M4	8	11.5	8	25
BC - 10	M6	10	14	10	25
BC - 12	M6	12	14	10	15
BC - 14	M8	14	17	12	15
BC - 15	M8	15	17	12	15
BC - 16	M8	16	17	12	15
BC - 20	M8	20	17	12	15

rtc TYPE BCO

rtc type BCO

Threadless Pressure Plug - Verschlussstopfen ohne Gewinde

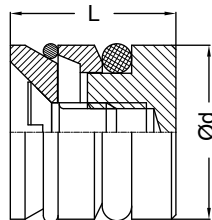
Interchangeability - Austauschbar mit EOC KN / 105

Material: MS58

Brass - Messing

O-Ring: Viton

Max. Temp: 200 °C



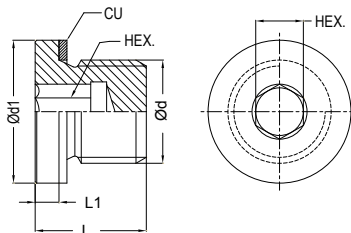
Order No / Bestellnr.	Ød	L	Package Pcs. Verpackungseinheit
BCO - 06	6	10	10
BCO - 07	7	10	10
BCO - 08	8	10	10
BCO - 8.5	8.5	10	10
BCO - 10	10	10	10
BCO - 10.5	10.5	10	10
BCO - 11	11	10	10
BCO - 11.5	11.5	10	10
BCO - 12	12	10	10
BCO - 14	14	10	10
BCO - 15	15	12	10
BCO - 16	16	12	10
BCO - 20	20	12	10
BCO - 23	23	12	10
BCO - 24	24	21.5	10
BCO - 25	25	21.5	10
BCO - 30	30	21.5	10

rtc TYPE PPD

rtc type PPD

Pressure plugs with copper washer - Verschlussstopfen mit Kupferscheibe

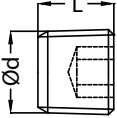
Material: MS 58 (Brass) - Messing (DIN 908)



Order No / Bestellnr.	Ød	Ød1	L	L1	HEX.
PPD 10	BSP 1/8	14	11	3	5
PPD 13	BSP 1/4	18	15	3	6
PPD 17	BSP 3/8	22	15	3	8
PPD 21	BSP 1/2	24	18	4	10
PPD 26	BSP 3/4	32	20	5	12
PPD 33	BSP 1	39	21	5	17
PPD 1010	M10x1	14	11	3	5
PPD 1215	M12x1.5	17	15	3	6
PPD 1415	M14x1.5	19	15	3	6
PPD 1615	M16x1.5	21	15	3	8
PPD 2215	M22x1.5	27	18	4	10
PPD 2415	M24x1.5	30	18	4	12

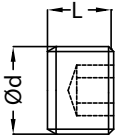
Pressure plug with conical thread DIN 906 / Verschlussstopfen mit konischem Gewinde DIN 906

TYPE PPR - PPK **rtc**

Pressure Plug / Verschlussstopfen	Order No / Bestellnr.	Ød	L	HEX.
Material: MS 58 (Brass) - Messing 	PPR 10	BSPT 1/8	8	5
	PPR 13	BSPT 1/4	10	7
	PPR 17	BSPT 3/8	10	8
	PPR 21	BSPT 1/2	10	10
	PPK 0875	M8x075	8	4
	PPK 1010	M10x1	8	5
	PPK 1215	M12x1.5	8	6
	PPK 1415	M14x1.5	10	7

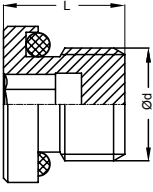
Pressure plug with parallel thread DIN 906 / Verschlussstopfen zylindrischem Gewinde DIN 906

TYPE PPG - PPM **rtc**

Pressure Plug / Verschlussstopfen	Order No / Bestellnr.	Ød	L	HEX.
Material: MS 58 (Brass) - Messing 	PPG 10	BSP 1/8	8	5
	PPG 13	BSP 1/4	10	7
	PPG 17	BSP 3/8	10	8
	PPG 21	BSP 1/2	10	10
	PPM 0875	M8x075	8	4
	PPM 1010	M10x1	8	5
	PPM 1215	M12x1.5	8	6
	PPM 1415	M14x1.5	10	7


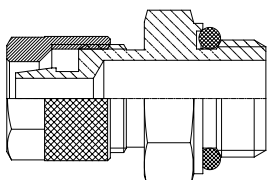
Pressure plug with O-ring DIN 908 / Verschlussstopfen mit O-ring DIN 908

TYPE PPO **rtc**

Pressure Plug / Verschlussstopfen	Order No / Bestellnr.	Ød	L	INNER HEX.
Material: MS 58 (Brass) - Messing 	PPO 10	BSP 1/8	9	5
	PPO 13	BSP 1/4	14	6
	PPO 17	BSP 3/8	16	8
	PPO 21	BSP 1/2	18	10
	PPO 26	BSP 3/4	20	12
	PPO 33	BSP 1	22	14
	PPO 42	BSP 1-1/4	24	16
	PPO 48	BSP 1-1/2	26	18
	PPO 60	BSP 2	28	20

Male threaded plastic hose nut / Aussengewinde Kunststoffschlauchmutter

TYPE NOP **rtc**

Adapter / Nippel	Connection / Anschluss	Order No / Bestellnr.	HEX.
Material: MS 58 (Brass) - Messing Plate: Nickel  	BSP 1/8 4x6 mm	NOP 10/06	14
	BSP 1/8 6x8 mm	NOP 10/08	14
	BSP 1/8 8x10 mm	NOP 10/10	14
	BSP 1/4 4x6 mm	NOP 13/06	16
	BSP 1/4 6x8 mm	NOP 13/08	16
	BSP 1/4 8x10 mm	NOP 13/10	16
	BSP 1/4 9x12 mm	NOP 13/12	16
	BSP 3/8 4x6 mm	NOP 17/06	21
	BSP 3/8 6x8 mm	NOP 17/08	21
	BSP 3/8 8x10 mm	NOP 17/10	21
	BSP 3/8 9x12 mm	NOP 17/12	21
	BSP 1/2 6x8 mm	NOP 21/08	24
	BSP 1/2 8x10 mm	NOP 21/10	24
	BSP 1/2 9x12 mm	NOP 21/12	24

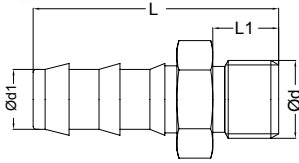
rtc TYPE MHN

Male thread Push to connect hose connect / Aussengewinde Schnellsteck Schlauchtülle



Adapter / Nippel

Material: MS 58 (Brass) - Messing
Plate: Nickel



Order No / Bestellnr.	Ød	Ød1	L	L1	HEX.
MHN 10-06 HT-1	BSP 1/8	6	39	7	14
MHN 10-10 HT-1	BSP 1/8	10	39	7	14
MHN 13-06 HT-1	BSP 1/4	6	39	9	17
MHN 13-10 HT-1	BSP 1/4	10	39	9	17
MHN 13-13 HT-1	BSP 1/4	13	39	9	17
MHN 17-10 HT-1	BSP 3/8	10	39	9	19
MHN 17-13 HT-1	BSP 3/8	13	43	9	19
MHN 21-10 HT-1	BSP 1/2	10	43	10	22
MHN 21-13 HT-1	BSP 1/2	13	43	10	22
MHN 21-16 HT-1	BSP 1/2	16	58	10	22
MHN 26-16 HT-1	BSP 3/4	16	62	16	27
MHN 26-19 HT-1	BSP 3/4	19	62	16	27
MHN 33-19 HT-1	BSP 1	19	69	19	35
MHN 1010-10 HT-1	M10x1	10	39	7	11
MHN 1415-13 HT-1	M14x1.5	13	39	9	15

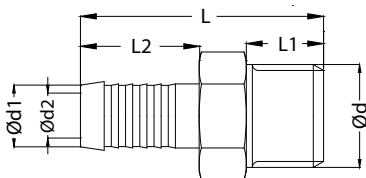
rtc TYPE MHN

Male thread hose connect / Aussengewinde Schlauchtülle



Adapter / Nippel

Material: MS 58 (Brass) - Messing
Plate: Nickel



Order No / Bestellnr.	Ød	Ød1	Ød2	L	L1	L2	HEX.
MHN 10-09 HT-2	BSP 1/8	9	6	33.5	7	22.5	11
MHN 13-09 HT-2	BSP 1/4	9	6	37.5	9	25	15
MHN 13-13 HT-2	BSP 1/4	13	8	40	9	22.5	15
MHN 17-09 HT-2	BSP 3/8	9	6	37.5	9	25	17
MHN 17-13 HT-2	BSP 3/8	13	9	40	9	25	17
MHN 21-19 HT-2	BSP 1/2	19	13	50	12	35	22
MHN 26-19 HT-2	BSP 3/4	19	13	56	16	35	27
MHN 1010-09 HT-2	M10x1	9	6	33.5	9	22.5	11
MHN 1215-13 HT-2	M12x1.5	13	7	40	9	25	15
MHN 1415-13 HT-2	M14x1.5	13	9	40	9	25	15
MHN 1615-13 HT-2	M16x1.5	13	9	40	9	25	17
MHN 2415-19 HT-2	M24x1.5	19	13	56	16	35	27

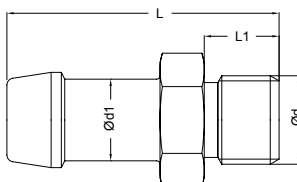
rtc TYPE MHN

Male thread hose connect / Aussengewinde Schlauchtülle



Adapter / Nippel

Material: MS 58 (Brass) - Messing
Plate: Nickel



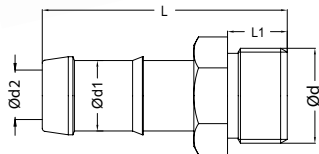
Order No / Bestellnr.	Ød	Ød1	L	L1	HEX.
MHN 10-04 HT6	BSP 1/8	4	38	8	14
MHN 10-06 HT6	BSP 1/8	6	38	8	14
MHN 10-08 HT6	BSP 1/8	8	43	8	14
MHN 10-10 HT6	BSP 1/8	10	43	8	14
MHN 13-06 HT6	BSP 1/4	6	41	11	17
MHN 13-08 HT6	BSP 1/4	8	46	11	17
MHN 13-09 HT6	BSP 1/4	9	46	11	17
MHN 13-10 HT6	BSP 1/4	10	46	11	17
MHN 13-13 HT6	BSP 1/4	13	51	11	17
MHN 17-08 HT6	BSP 3/8	8	47	12	19
MHN 17-10 HT6	BSP 3/8	10	47	12	19
MHN 17-13 HT6	BSP 3/8	13	52	12	19
MHN 17-16 HT6	BSP 3/8	16	52	12	18
MHN 21-13 HT6	BSP 1/2	13	54	14	23
MHN 21-16 HT6	BSP 1/2	16	54	14	23
MHN 26-16 HT6	BSP 3/4	16	58	16	23

Male thread hose connect / Aussengewinde Schlauchtülle

TYPE MHN **rtc**

Adapter / Nippel

Material: Steel - Stahl
Plate: Zinc



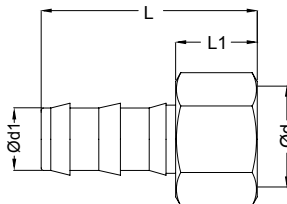
Order No / Bestellnr.	Ød	Ød1	Ød2	L	L1	HEX.
MHN 17-13 HT-8	BSP 3/8	13	9	59	12	19
MHN 17-16 HT-8	BSP 3/8	16	11	59	12	23
MHN 21-13 HT-8	BSP 1/2	13	9	61	14	23
MHN 21-16 HT-8	BSP 1/2	16	11	61	14	23
MHN 21-19 HT-8	BSP 1/3	19	11	61	14	23
MHN 26-19 HT-8	BSP 3/4	19	15	65	16	29
MHN 26-25 HT-8	BSP 3/4	25	19	80	16	35
MHN 33-19 HT-8	BSP 1	19	15	84	20	35
MHN 33-25 HT-8	BSP 1	25	19	84	20	35

Female thread Push to connect hose connect / Innengewinde Schnellsteck Schlauchtülle

TYPE FHN **rtc**

Adapter / Nippel

Material: MS 58 (Brass) - Messing
Plate: Nickel



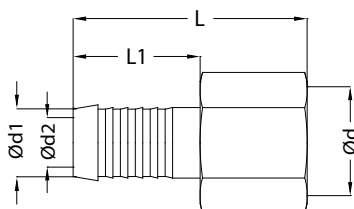
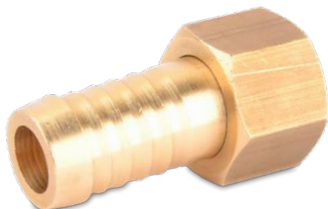
Order No / Bestellnr.	Ød	Ød1	L	L1	HEX.
FHN 10-06 HT-1	BSP 1/8	6	36	12	14
FHN 10-10 HT-1	BSP 1/8	10	36	12	14
FHN 13-06 HT-1	BSP 1/4	6	40	16	17
FHN 13-10 HT-1	BSP 1/4	10	40	16	17
FHN 13-13 HT-1	BSP 1/4	13	44	16	17
FHN 17-10 HT-1	BSP 3/8	10	40	16	20
FHN 17-13 HT-1	BSP 3/8	13	44	16	20
FHN 21-10 HT-1	BSP 1/2	10	41	17	24
FHN 21-13 HT-1	BSP 1/2	13	45	17	24
FHN 21-16 HT-1	BSP 1/2	16	55	17	24
FHN 26-16 HT-1	BSP 3/4	16	67	19	30
FHN 26-19 HT-1	BSP 3/4	19	67	19	30
FHN 1010-10 HT-1	M10x1	10	36	12	14
FHN 1415-13 HT-1	M14x1.5	13	40	16	17

Female thread Push to connect hose connect / Innengewinde Schnellsteck Schlauchtülle

TYPE FHN **rtc**

Adapter / Nippel

Material: MS 58 (Brass) - Messing



Order No / Bestellnr.	Ød	Ød1	Ød2	L	L1	HEX.
FHN 10-06 HT2	BSP 1/8	6	4.5	28	17	12
FHN 10-08 HT2	BSP 1/8	8	6.5	28	17	12
FHN 13-06 HT2	BSP 1/4	6	4.5	28.5	17	17
FHN 13-08 HT2	BSP 1/4	8	6.5	28.5	17	17
FHN 13-10 HT2	BSP 1/4	10	8	34	22.5	17
FHN 13-13 HT2	BSP 1/4	13	10	37	25	17
FHN 17-08 HT2	BSP 3/8	8	6.5	30	17	19
FHN 17-10 HT2	BSP 3/8	10	8	35	22.5	19
FHN 17-13 HT2	BSP 3/8	13	10	38	25	19
FHN 21-10 HT2	BSP 1/2	10	8	38	22.5	24
FHN 21-13 HT2	BSP 1/2	13	10	41	25	24
FHN 21-16 HT2	BSP 1/2	16	13	41	25	24
FHN 26-16 HT2	BSP 3/4	16	13	41	25	30
FHN 26-19 HT2	BSP 3/4	19	16	48	32	30
FHN 1415-09 HT2	M14x1.5	9	7	36	22.5	17
FHN 1415-13 HT2	M14x1.5	13	10	38.5	25	17
FHN 1615-09 HT2	M16x1.5	9	7	36	22.5	19
FHN 1615-13 HT2	M16x1.5	13	10	38.5	25	19
FHN 2415-19 HT2	M24x1.5	19	15	55	32	30

rtc TYPE SPN

Female thread swivel adapter nipple / Nippel mit Innengewinde Schwenkadapter

Adapter / Nippel

Size
Größe

Order No / Bestellnr.

Ød

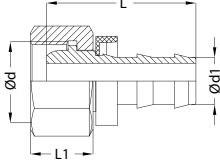
Ød1

L

L1

HEX.

Material: Steel - Stahl
Plate: Zinc



6	SPN 1215-06	M12x1.5	1/4 - 6.3	33	14.5	14
6	SPN 1415-06	M14x1.5	1/4 - 6.3	33	14.5	17
10	SPN 1615-10	M16x1.5	3/8 - 9.5	38	15.5	19
10	SPN 1815-10	M18x1.5	3/8 - 9.5	38	15.5	22
12	SPN 2215-13	M22x1.5	1/2 - 12.7	42	17	27
16	SPN 2615-16	M26x1.5	5/8 - 15.9	53	18	32
20	SPN 3020-19	M30x2.0	3/4 - 19.1	53	20	36
25	SPN 3620-25	M36x2.0	1 - 25.4	58	21	41

rtc TYPE SPN

Female thread swivel adapter nipple 90° / Nippel mit Innengewinde Schwenkadapter 90°

Adapter / Nippel

Size
Größe

Order No / Bestellnr.

Ød

Ød1

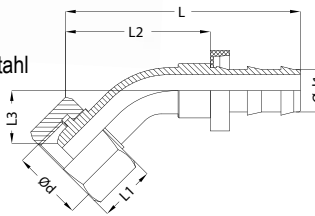
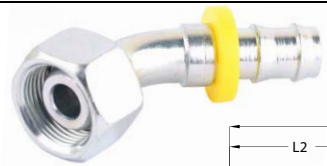
L

L1

L2

L3

HEX.



Material: Steel - Stahl
Plate: Zinc

6	SPN 1215-06-45	M12x1.5	1/4 - 6.3	51	14.5	32	16	14
6	SPN 1415-06-45	M14x1.5	1/4 - 6.3	51	14.5	32	16	17
10	SPN 1615-10-45	M16x1.5	3/8 - 9.5	58	15.5	35	18	19
10	SPN 1815-10-45	M18x1.5	3/8 - 9.5	59	15.5	36	18	22
12	SPN 2215-13-45	M22x1.5	1/2 - 12.7	68	17	45	19	27
16	SPN 2615-16-45	M26x1.5	5/8 - 15.9	81	18	45	21	32
20	SPN 3020-19-45	M30x2.0	3/4 - 19.1	89	20	52	23	36
25	SPN 3620-25-45	M36x2.0	1 - 25.4	105	21	67	30	41

rtc TYPE SPN

Female thread swivel adapter nipple 90° / Nippel mit Innengewinde Schwenkadapter 90°

Adapter / Nippel

Size
Größe

Order No / Bestellnr.

Ød

Ød1

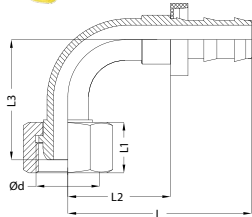
L

L1

L2

L3

HEX.



Material: Steel - Stahl
Plate: Zinc

6	SPN 1215-06-90	M12x1.5	1/4 - 6.3	33	14.5	23	29	14
6	SPN 1415-06-90	M14x1.5	1/4 - 6.3	33	14.5	23	29	17
10	SPN 1615-10-90	M16x1.5	3/8 - 9.5	38	15.5	27	31	19
10	SPN 1815-10-90	M18x1.5	3/8 - 9.5	38	15.5	27	34	22
12	SPN 2215-13-90	M22x1.5	1/2 - 12.7	42	17	34	39	27
16	SPN 2615-16-90	M26x1.5	5/8 - 15.9	53	18	37	43	32
20	SPN 3020-19-90	M30x2.0	3/4 - 19.1	53	20	51	50	36
25	SPN 3620-25-90	M36x2.0	1 - 25.4	58	21	61	70	41

rtc TYPE MRN

Male Metric with inner cone 60° to BSPT adapter - Verschraubung Metrisch Innenkonus 60°/ BSPT Aussengewinde

Adapter / Nippel

Order No / Bestellnr.

Ød

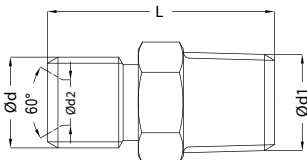
Ød1

Ød2

L

HEX.

Material: Steel - Stahl
Plate: Zinc

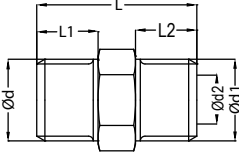



MRN 10-1210-06	M12x1.0	BSPT 1/8	6	21	14
MRN 13-1210-06	M12x1.0	BSPT 1/4	6	26	14
MRN 10-1215-06	M12x1.5	BSPT 1/8	6	26	14
MRN 13-1215-06	M12x1.5	BSPT 1/4	6	30	14
MRN 13-1415-08	M14x1.5	BSPT 1/4	8	30	17
MRN 17-1415-08	M14x1.5	BSPT 3/8	8	30	19
MRN 17-1615-10	M16x1.5	BSPT 3/8	10	30	19
MRN 21-1615-10	M16x1.5	BSPT 1/2	10	33	24
MRN 17-1815-12	M18x1.5	BSPT 3/8	12	31	19
MRN 21-1815-12	M18x1.5	BSPT 1/2	12	38	24
MRN 17-2215-15	M22x1.5	BSPT 3/8	15	33	24
MRN 21-2215-15	M22x1.5	BSPT 1/2	15	35	24
MRN 26-2615-18	M26x1.5	BSPT 3/4	18	38	27
MRN 33-3020-22	M30x2.0	BSPT 1	22	54	35
MRN 42-3620-26	M36x2.0	BSPT 1-1/4	26	58	46



Male thread adapters with inner cone DIN 3863 / Aussengewinde Doppelnippel mit Innenkonus DIN 3863


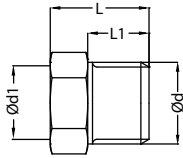
TYPE **MMN** 

Adapter / Nippel	Order No / Bestellnr.	Ød	Ød1	Ød2	L	L1	L2	HEX.
Material: MS 58 (Brass) - Messing  	MMN 13-13	BSP 1/4	BSP 1/4	6	23	9	9	17
	MMN 17-17	BSP 3/8	BSP 3/8	9	23	9	9	19
	MMN 21-21	BSP 1/2	BSP 1/2	13	30	12	12	22
	MMN 26-26	BSP 3/4	BSP 3/4	13	40	16	16	27
	MMN 13-1415	BSP 1/4	M14x1.5	6	23	9	9	17
	MMN 13-1615	BSP 1/4	M16x1.5	6	23	9	9	19
	MMN 17-1415	BSP 3/8	M14x1.5	8	23	9	9	19
	MMN 17-1615	BSP 3/8	M16x1.5	9	23	9	9	19
	MMN 21-1415	BSP 1/2	M14x1.5	6	30	12	9	22
	MMN 21-1615	BSP 1/2	M16x1.5	9	30	12	9	22
	MMN 21-2415	BSP 1/2	M24x1.5	13	36	16	12	27
	MMN 26-2415	BSP 3/4	M24x1.5	13	40	16	16	27
	MMN 1415-1415	M14x1.5	M14x1.5	6	23	9	9	17
	MMN 1615-1615	M16x1.5	M16x1.5	9	23	9	9	19
	MMN 2415-2415	M24x1.5	M24x1.5	13	40	16	16	27
	MMN 1415-1615	M14x1.5	M16x1.5	9	23	9	9	17
	MMN 1415-1815	M14x1.5	M18x1.5	9	26	12	9	19
	MMN 1615-1815	M16x1.5	M18x1.5	9	26	12	9	19



Male - Female thread adapters / Aussen - Innengewinde Adapter

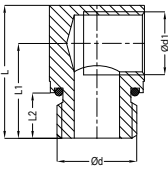
TYPE **MFN** 

Adapter / Nippel	Order No / Bestellnr.	Ød	Ød1	L	L1	HEX.
Material: MS 58 (Brass) - Messing  	MFN 13-10	BSP 1/4	BSP 1/8	11	7	17
	MFN 17-13	BSP 3/8	BSP 1/4	13	9	19
	MFN 21-17	BSP 1/2	BSP 3/8	18	12	24
	MFN 26-21	BSP 3/4	BSP 1/2	24	16	27
	MFN 1415-1010	M14x1.5	M10x1	11	7	17
	MFN 1815-1415	M18x1.5	M14x1.5	14	9	21
	MFN 2415-1615	M24x1.5	M16x1.5	24	16	27



Male - Female thread adapters (90°) / Außen - Innengewinde Adapter (90°)

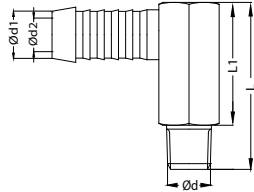
TYPE **ELB** 

Adapter / Nippel	Order No / Bestellnr.	Ød	Ød1	L	L1	L2	#
Material: MS 58 (Brass) - Messing Plate: Nickel  	ELB 13-10	BSP 1/4	BSP 1/8	25	17	9	15
	ELB 17-13	BSP 3/8	BSP 1/4	27.5	19	9	20
	ELB 21-17	BSP 1/2	BSP 3/8	35	25	15	25



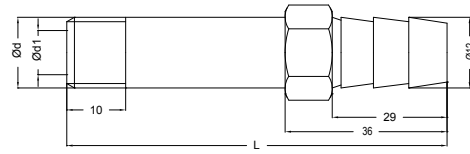
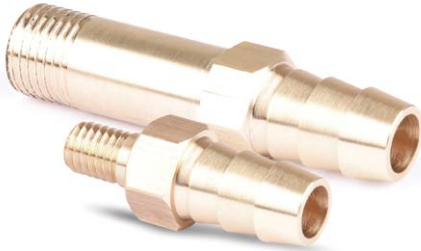
Male - Hose adapters (90°) / Aussengewinde Schauchanschluss Adapter (90°)

TYPE **ELB** 

Adapter / Nippel	Order No / Bestellnr.	Ød	Ød1	Ød2	L	L1	HEX.
	MHN 10-09 HT-2 90	BSPT 1/8	9	6	27	20	15
	MHN 13-13 HT-2 90	BSPT 1/4	13	9	34	24	17
	MHN 21-19 HT-2 90	BSPT 1/2	19	13	47	32	24
	MHN 0875-09 HT-2 90	M8x0.75	9	4.5	27	20	15
	MHN 1010-09 HT-2 90	M10x1	9	6	27	20	15
	MHN 1415-13 HT-2 90	M14x1.5	13	9	34	24	17
	MHN 2415-19 HT-2 90	M24x1.5	19	13	47	32	24

rtc TYPE SRM / SRG

Extension Plugs / Erweiterung Nippels



Order No / Bestellnr.	Ød	Ød1	L	HEX.
SRM 08 x 38	M 8x1.25	5	38	13
SRM 08 x 60	M 8x1.25	5	60	13
SRM 08 x 80	M 8x1.25	5	80	13
SRM 08 x 100	M 8x1.25	5	100	13
SRM 10 x 38	M 10x1.5	6	38	13
SRM 10 x 60	M 10x1.5	6	60	13
SRM 10 x 80	M 10x1.5	6	80	13
SRM 10 x 100	M 10x1.5	6	100	13
SRM 10 x 120	M 10x1.5	6	120	13
SRM 10 x 150	M 10x1.5	6	150	13
SRM 12 x 38	M 12x1.75	7	38	13
SRM 12 x 60	M 12x1.75	7	60	13
SRM 12 x 80	M 12x1.75	7	80	13
SRM 12 x 100	M 12x1.75	7	100	13
SRM 12 x 120	M 12x1.75	7	120	13
SRM 12 x 150	M 12x1.75	7	150	13
SRM 14 x 38	M 14x2.0	7	38	14

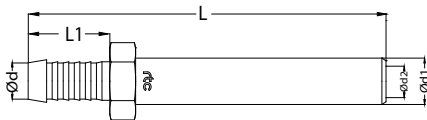
Order No / Bestellnr.	Ød	Ød1	L	HEX.
SRG 10 x 38	BSP 1/8	6	38	13
SRG 10 x 60	BSP 1/8	6	60	13
SRG 10 x 80	BSP 1/8	6	80	13
SRG 10 x 100	BSP 1/8	6	100	13
SRG 10 x 120	BSP 1/8	6	120	13
SRG 10 x 150	BSP 1/8	6	150	13
SRG 13 x 38	BSP 1/4	8	38	14
SRG 13 x 60	BSP 1/4	8	60	14
SRG 13 x 80	BSP 1/4	8	80	14
SRG 13 x 100	BSP 1/4	8	100	14
SRG 13 x 120	BSP 1/4	8	120	14
SRG 13 x 150	BSP 1/4	8	150	14

rtc TYPE FHE

Extension hose stems / Schlauchtülleverlängerung



Adapter / Nippel



Order No / Bestellnr.	Ød	Ød1	Ød2	L	L1	HEX.
FHE 09-120 HT2	10	9	6	120	22.5	12
FHE 13-150 HT2	14	13	9	150	25	15

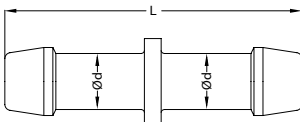
rtc TYPE HHN

Hose to Hose adapter



Adapter / Nippel

Material: MS 58 (Brass) - Messing



Order No / Bestellnr.	Ød	L
HHN 04 HT-6	4 mm	50
HHN 06 HT-6	6 mm	50
HHN 08 HT-6	8 mm	50
HHN 09 HT-6	9 mm	50
HHN 10 HT-6	10 mm	50
HHN 13 HT-6	13 mm	58
HHN 16 HT-6	16 mm	58
HHN 19 HT-6	19 mm	75
HHN 25 HT-6	25 mm	85

rtc TYPE FHNN

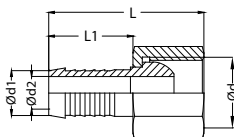
Standard hose connection with outer cone DIN 3863 and hex nut
Standard Schlauchtülle mit Überwurfmutter - Nippel mit Außenkonus DIN 3863



Adapter / Nippel

Material: MS 58 (Brass) - Messing

Plate: Nickel




Order No / Bestellnr.	Ød	Ød1	Ød2	L	L1	HEX.
FHNN 13-09 HT2	BSP 1/4	9	6	40	22.5	17
FHNN 17-13 HT2	BSP 3/8	13	9	41	22.5	21
FHNN 26-19 HT2	BSP 3/4	19	13	52	32	32
FHNN 1415-09 HT2	M14x1.5	9	6	40	22.5	17
FHNN 1615-13 HT2	M16x1.5	13	9	41	22.5	21
FHNN 2415-19 HT2	M24x1.5	19	13	52	32	30



Elbow 90° / Winkel 90°


TYPE **EBFM 90** **rtc**

Adapter / Nippel	Order No / Bestellnr.	Connection / Anschluss	
		Male Aussengewinde	Female Innengewinde
Material: MS 58 (Brass) - Messing 	EBFM 10 - 90	BSP 1/8	BSP 1/8
	EBFM 13 - 90	BSP 1/4	BSP 1/4
	EBFM 17 - 90	BSP 3/8	BSP 3/8
	EBFM 21 - 90	BSP 1/2	BSP 1/2
	EBFM 26 - 90	BSP 3/4	BSP 3/4
	EBFM 33 - 90	BSP 1	BSP 1
	EBFM 42 - 90	BSP 1-1/4	BSP 1-1/4
	EBFM 48 - 90	BSP 1-1/2	BSP 1-1/2
	EBFM 60 - 90	BSP 2	BSP 2




Elbow 45° / Winkel 45°


TYPE **EBFM 45** **rtc**

Adapter / Nippel	Order No / Bestellnr.	Connection / Anschluss	
		Male Aussengewinde	Female Innengewinde
Material: MS 58 (Brass) - Messing 	EBFM 10 - 45	BSP 1/8	BSP 1/8
	EBFM 13 - 45	BSP 1/4	BSP 1/4
	EBFM 17 - 45	BSP 3/8	BSP 3/8
	EBFM 21 - 45	BSP 1/2	BSP 1/2
	EBFM 26 - 45	BSP 3/4	BSP 3/4
	EBFM 33 - 45	BSP 1	BSP 1
	EBFM 42 - 45	BSP 1-1/4	BSP 1-1/4
	EBFM 48 - 45	BSP 1-1/2	BSP 1-1/2
	EBFM 60 - 45	BSP 2	BSP 2

Hose Clamps / Schlauchschellen TYPE **CPW2** **rtc**

Hose Clamps / Schlauchschellen	Order No / Bestellnr.	Hose Outer Diameter Range (mm) / (inch)		Quantity Pack
Material: Screw - DIN 1132 Zinc Plated Steel Housing - AISI 430 (DIN 1.4016 Stainless Steel) Band - AISI 430 (DIN 1.4016 Stainless Steel) 	CPW2 - 1016 - 09	10 - 16	3/8 - 5/8	50
	CPW2 - 1220 - 09	12 - 20	1/2 - 3/4	50
	CPW2 - 1222 - 09	12 - 22	1/2 - 7/8	50
	CPW2 - 1627 - 09	16 - 27	5/8 - 1-1/16	50
	CPW2 - 2032 - 09	20 - 32	3/4 - 1-1/4	50
	CPW2 - 2540 - 09	25 - 40	1 - 1-5/8	50

Hose Clamps / Schlauchschellen TYPE **CPE** **rtc**

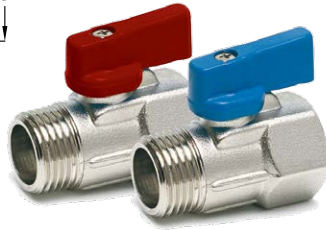
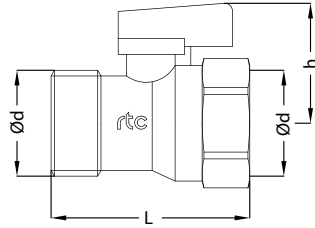
Hose Clamps / Schlauchschellen	Order No / Bestellnr.	Hose Diameter (mm)	Quantity Pack
Material: W1 - DIN 1.0330 Mild Steel 	CPE - 1315	13-15	100
	CPE - 1417	14-17	100
	CPE - 1518	15-18	100
	CPE - 1720	17-20	100
	CPE - 1821	18-21	100

rtc TYPE KVFM

Mini ball valve with female to male connection / Kugelventil



Mini Ball Valve / Mini Kugelventil



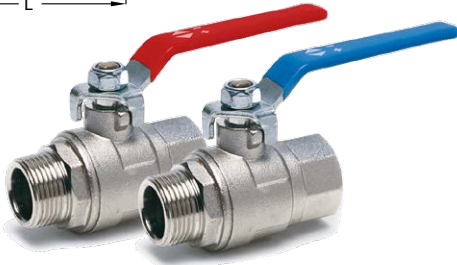
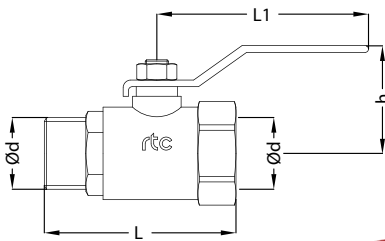
Connection / Anschluss		Order No / Bestellnr.		L	h	Bar
Ød Female	Ød Male	Red / Rot	Blue/ Blau			
BSP 1/4		KVFM 13-R	KVFM 13-B	38	30	16
BSP 3/8		KVFM 17-R	KVFM 17-B	38	30	16
BSP 1/2		KVFM 21-R	KVFM 21-B	41	32	16
BSP 3/4		KVFM 26-R	KVFM 26-B	51	32	16

rtc TYPE SVFM

Standard ball valve with female to male connection / Kugelventil



Standard Ball Valve / Standart Kugelventil



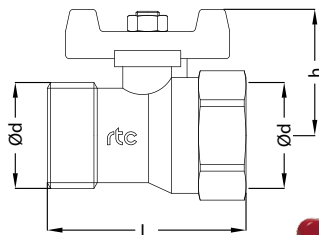
Connection / Anschluss		Order No / Bestellnr.		L	L1	h	Bar
Ød Female	Ød Male	Red / Rot	Blue/ Blau				
BSP 1/4		SVFM 13-R	SVFM 13-B	57	109	35	25
BSP 3/8		SVFM 17-R	SVFM 17-B	57	109	35	25
BSP 1/2		SVFM 21-R	SVFM 21-B	65	109	44	25
BSP 3/4		SVFM 26-R	SVFM 26-B	72	109	47	25
BSP 1		SVFM 33-R	SVFM 33-B	86	119	52	25
BSP 1-1/4		SVFM 42-R	SVFM 42-B	102	137	57	25
BSP 1-1/2		SVFM 48-R	SVFM 48-B	110	162	73	25

rtc TYPE TVFM

T Handle ball valve with female to male connection / Kugelventil



Standard Ball Valve / Standart Kugelventil



Connection / Anschluss		Order No / Bestellnr.		L	h	Bar
Ød Female	Ød Male	Red / Rot	Blue/ Blau			
BSP 1/4		TVFM 13-R	TVFM 13-B	57	37	25
BSP 3/8		TVFM 17-R	TVFM 17-B	57	37	25
BSP 1/2		TVFM 21-R	TVFM 21-B	65	41	25
BSP 3/4		TVFM 26-R	TVFM 26-B	72	44	25
BSP 1		TVFM 33-R	TVFM 33-B	86	53	25
BSP 1-1/4		TVFM 42-R	TVFM 42-B	102	58	25

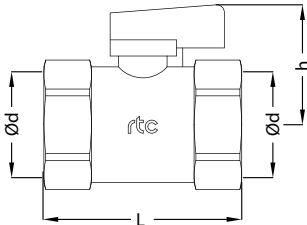


Mini ball valve with female to female connection / Kugelventil

TYPE KVFF



Mini Ball Valve / Mini Kugelventil



Connection / Anschluss	Order No / Bestellnr.		L	h	Bar
	Ød Female	Ød Female			
BSP 1/4		KVFF 13-R / KVFF 13-B	38	30	16
BSP 3/8		KVFF 17-R / KVFF 17-B	38	30	16
BSP 1/2		KVFF 21-R / KVFF 21-B	41	32	16
BSP 3/4		KVFF 26-R / KVFF 26-B	51	32	16

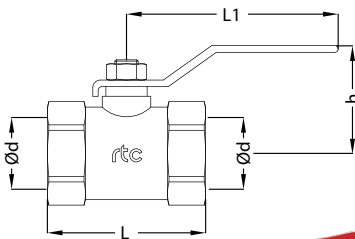


Standard ball valve with female to female connection / Kugelventil

TYPE SVFF



Standard Ball Valve / Standard Kugelventil



Connection / Anschluss	Order No / Bestellnr.		L	L1	h	Bar
	Ød Female	Ød Female				
BSP 1/4		SVFF 13-R / SVFF 13-B	49	109	48	25
BSP 3/8		SVFF 17-R / SVFF 17-B	49	109	48	25
BSP 1/2		SVFF 21-R / SVFF 21-B	58	109	48	25
BSP 3/4		SVFF 26-R / SVFF 26-B	68	109	51	25
BSP 1		SVFF 33-R / SVFF 33-B	83	119	57	25
BSP 1-1/4		SVFF 42-R / SVFF 42-B	98	137	64	25
BSP 1-1/2		SVFF 48-R / SVFF 48-B	109	162	74	25

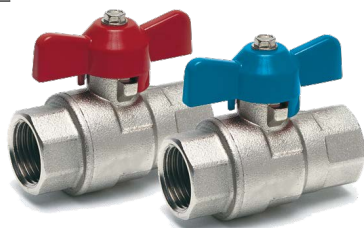
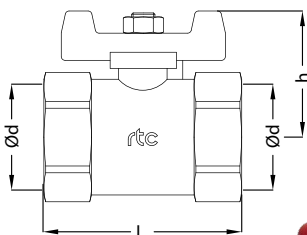


T Handle ball valve with female to male connection / Kugelventil

TYPE TVFF



Standard Ball Valve / Standard Kugelventil



Connection / Anschluss	Order No / Bestellnr.		L	h	Bar
	Ød Female	Ød Female			
BSP 1/4		TVFF 13-R / TVFF 13-B	49	37	25
BSP 3/8		TVFF 17-R / TVFF 17-B	49	37	25
BSP 1/2		TVFF 21-R / TVFF 21-B	58	41	25
BSP 3/4		TVFF 26-R / TVFF 26-B	68	44	25
BSP 1		TVFF 33-R / TVFF 33-B	83	53	25
BSP 1-1/4		TVFF 42-R / TVFF 42-B	98	60	25

rtc TYPE LOCK90

Push to Connect Hoses for max. 90°C / Schnellsteck Schlauch für max. 90°C

Order No / Bestellnr.	Ø Inside		Ø Outside mm	Max Working Pressure		Bursting Pressure		Bending Radius mm	W/A g/m
	Inch	mm		Bar	Psi	Bar	Psi		
rtc-LOCK90-10R	3/8	9,5	15,5	28	406	112	1624	80	150
rtc-LOCK90-10B	3/8	9,5	15,5	28	406	112	1624	80	150
rtc-LOCK90-10S	3/8	9,5	15,5	28	406	112	1624	80	150
rtc-LOCK90-12R	1/2	12,7	19,5	28	406	112	1624	100	220
rtc-LOCK90-12B	1/2	12,7	19,5	28	406	112	1624	100	220
rtc-LOCK90-12S	1/2	12,7	19,5	28	406	112	1624	100	220
rtc-LOCK90-16R	5/8	16,0	22,6	24	348	96	1392	125	260
rtc-LOCK90-16B	5/8	16,0	22,6	24	348	96	1392	125	260
rtc-LOCK90-16S	5/8	16,0	22,6	24	348	96	1392	125	260
rtc-LOCK90-19R	3/4	19,0	25,8	21	305	84	1218	150	305
rtc-LOCK90-19B	3/4	19,0	25,8	21	305	84	1218	150	305
rtc-LOCK90-19S	3/4	19,0	25,8	21	305	84	1218	150	305
rtc-LOCK90-25R	1	25,4	33,2	20	290	80	1060	170	460
rtc-LOCK90-25B	1	25,4	33,2	20	290	80	1060	170	460
rtc-LOCK90-25S	1	25,4	33,2	20	290	80	1060	170	460

Working Temperature Range for water | -40°C to +90°C
Arbeitsbereich für wasser | -40°F to +194°F

Working Temperature Range for air | -40°C to +70°C
Arbeitsbereich für luft | -40°F to +158°F



rtc TYPE LOCK90S

Special Push to Connect Hoses for max. 90°C / Spezial Schnellsteck Schlauch für max. 90°C

Working Temperature Range for water | -40°C to +90°C
Arbeitsbereich für wasser | -40°F to +194°F

Working Temperature Range for air | -40°C to +70°C
Arbeitsbereich für luft | -40°F to +158°F

Order No / Bestellnr.	Ø Inside		Ø Outside mm	Max Working Pressure		Bursting Pressure		Bending Radius mm	W/A g/m
	Inch	mm		Bar	Psi	Bar	Psi		
rtc-LOCK90S-10R	3/8	9,5	15,3	24	348	112	1624	80	170
rtc-LOCK90S-10B	3/8	9,5	15,3	24	348	112	1624	80	170
rtc-LOCK90S-10S	3/8	9,5	15,3	24	348	112	1624	80	170
rtc-LOCK90S-12R	1/2	12,7	19,5	21	305	112	1624	100	230
rtc-LOCK90S-12B	1/2	12,7	19,5	21	305	112	1624	100	230
rtc-LOCK90S-12S	1/2	12,7	19,5	21	305	112	1624	100	230
rtc-LOCK90S-16R	5/8	16,0	22,6	21	305	96	1392	125	270
rtc-LOCK90S-16B	5/8	16,0	22,6	21	305	96	1392	125	270
rtc-LOCK90S-16S	5/8	16,0	22,6	21	305	96	1392	125	270
rtc-LOCK90S-19R	3/4	19,0	25,8	20	290	84	1218	150	320
rtc-LOCK90S-19B	3/4	19,0	25,8	20	290	84	1218	150	320
rtc-LOCK90S-19S	3/4	19,0	25,8	20	290	84	1218	150	320
rtc-LOCK90S-25R	1	25,4	33,2	20	290	80	1060	170	470
rtc-LOCK90S-25B	1	25,4	33,2	20	290	80	1060	170	470
rtc-LOCK90S-25S	1	25,4	33,2	20	290	80	1060	170	470

Push to Connect Hoses for max. 140 °C / Schnellsteck Schlauch für max. 140 °C

TYPE LOCK140S 

Order No / Bestellnr.	Ø Inside		Ø Outside	Max Working Pressure		Bursting Pressure		Bending Radius	W/A
	Inch	mm	mm	Bar	Psi	Bar	Psi	mm	g/m
rtc-LOCK140S-10R	3/8	9,5	15,3	28	406	200	2900	75	165
rtc-LOCK140S-10B	3/8	9,5	15,3	28	406	200	2900	75	165
rtc-LOCK140S-10S	3/8	9,5	15,3	28	406	200	2900	75	165
rtc-LOCK140S-12R	1/2	12,7	19,5	28	406	200	2900	100	245
rtc-LOCK140S-12B	1/2	12,7	19,5	28	406	200	2900	100	245
rtc-LOCK140S-12S	1/2	12,7	19,5	28	406	200	2900	100	245
rtc-LOCK140S-16R	5/8	16,0	22,6	24	348	140	2320	115	290
rtc-LOCK140S-16B	5/8	16,0	22,6	24	348	140	2320	115	290
rtc-LOCK140S-16S	5/8	16,0	22,6	24	348	140	2320	115	290
rtc-LOCK140S-19R	3/4	19,0	25,8	21	305	130	1885	140	345
rtc-LOCK140S-19B	3/4	19,0	25,8	21	305	130	1885	140	345
rtc-LOCK140S-19S	3/4	19,0	25,8	21	305	130	1885	140	345
rtc-LOCK140S-25R	1	25,4	33,2	20	290	90	1305	170	475
rtc-LOCK140S-25B	1	25,4	33,2	20	290	90	1305	170	475
rtc-LOCK140S-25S	1	25,4	33,2	20	290	90	1305	170	475

Working Temperature Range for water
Arbeitsbereich für wasser

-40°C to +140°C
-40°F to +284°F

Working Temperature Range for air
Arbeitsbereich für luft

-40°C to +70°C
-40°F to +158°F

ASSEMBLE / MONTAGE 

In order to keep the hose in the correct angle cut it with a sharp knife or hose cutter (SAS26).

Schlauch rechtwinklig mit scharfem Messer oder Schlauchabschneider (SAS26) abschneiden.



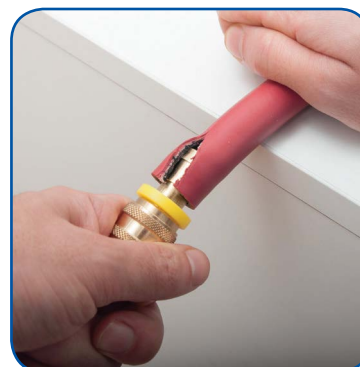
Put the nipple inside the tube and push it to the yellow stop. Then just pull back.

Nippel in den Schlauch stecken und bis zum gelben Anschlag eindrücken. Anschließend kurz zurück ziehen.

DISASSEMBLE / DEMONTAGE 

Slightly cut the hose with a knife on the longitudinal axis. Pay attention not to damage the nipple.

Mit einem Messer den Schlauch leicht schräg zur Längsachse aufschneiden. Dabei dürfen die Rippen des Nippels nicht beschädigt werden.



Nipple is now pulled out of the hose and it can be used again.

Nippel aus dem Schlauch herausziehen und wiederverwenden.

rtc TYPE RTH



Corrugated

PTFE / PFA - Hose
PTFE: High quality inner liner of polytetrafluoroethylene-fluorinated ethylene or PFA, Perfluoralkoxy copolymer
Print rack stainless steel wire braid with fiber glass fabric or brass plated steel wire braid provide burst pressure up to 2,000 bar.
For use at high operating temperatures, as well as the chemical media; Stainless steel fittings, brass and mild steel, development and manufacturing. Customized packing

Why PTFE / PFA tubing?

- High chemical resistance to almost all chemicals, detergents and solvents
- Low weight, high flexibility with high bending strength • weathering, UV light and aging
- Water absorption <0.1%
- High temperature resistance from -70 ° and +250 °
- Extremely low internal friction value
- braid in stainless steel wire
- Also available with abrasion-proof plastic top cover

Gewellter

PTFE / PFA - Schlauch
PTFE: Hochwertige Innenseele aus Polyetra-Fluorethylen bzw. PFA, Perfluoralkoxy- Copolymer
Druckträger aus Edelstahlraht-Geflecht mit Glasseiden-Gewebe oder aus vermessingtem Stahldraht-Geflecht sorgen für Platzdruck bis zu 2.000 bar. Einsatz bei hohen Betriebstemperaturen, sowie chemischen Medien; Armaturen aus Edelstahl, Messing und Normalstahl, Entwicklung und Fertigung. Kundenspezifische Konfektionierung

Warum PTFE / PFA Schläuche?

- Hohe chemische Beständigkeit gegenüber fast allen Chemikalien, Reinigungs- und Lösungsmitteln
- Niedriges Gewicht, höch ste Flexibilität bei hoher Biegefestigkeit • Witterungs-, UV-Licht- und alterungsbeständig
- Wasseraufnahme < 0,1%
- Hohe Temperaturbeständigkeit zwischen -70° und +250°
- Extrem niedriger innerer Reibungswert
- Umflechtung in Edelstahlraht
- Auch mit abriebfester Kunststoffoberdecke lieferbar

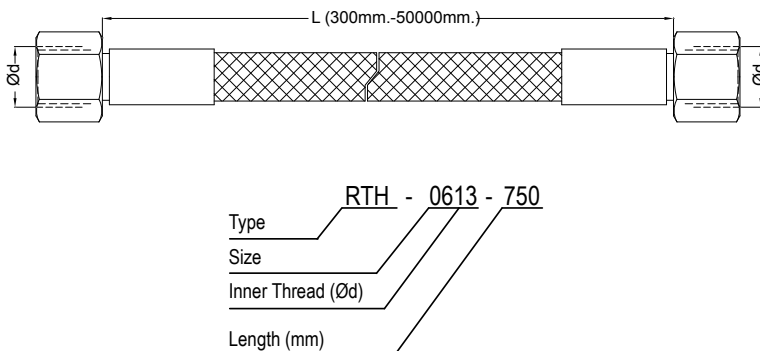
rtc TYPE RTH

Corrugated PTFE / PFA - Hose / Gewellter PTFE / PFA - Schlauch

Order No / Bestellnr.	Size Größe mm	Inside Innen Ø mm	Outside Außen Ø mm	Bending Radius Biegeradius mm	Max Working Pressure Arbeitsdruck bar	Burst Pressure Platzdruck bar
RTH-06	4	6.8	11.5	30	90	360
RTH-08	5	7.7	12.5	40	70	280
RTH-10	6	9.7	15	50	65	260
RTH-13	8	12.5	18	60	60	240
RTH-16	10	15.5	22	60	55	220
RTH-20	12	19.8	27	70	45	180
RTH-25	16	28	34.8	80	30	120

rtc TYPE RTH

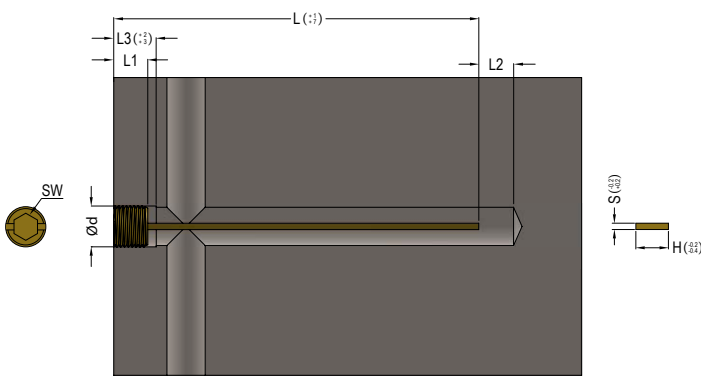
Corrugated PTFE / PFA - Hose with connection adapter / Gewellter PTFE / PFA - Schlauch mit Anschlussadapter



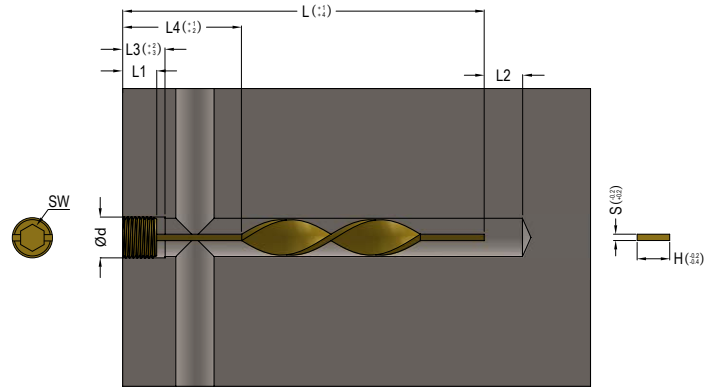
Order No / Bestellnr.	Size Größe	Connections Anschluss Ød	L (mm)
RTH-0613-L	4	BSP 1/4	300 - 50.000
RTH-0614-L		M14x1.5	
RTH-0817-L	5	BSP 3/8	
RTH-0816-L		M16x1.5	
RTH-1021-L	6	BSP 1/2	
RTH-1018-L		M18x1.5	
RTH-1326-L	8	BSP 3/4	
RTH-1322-L		M22x1.5	
RTH-1633-L	10	BSP 1	
RTH-1626-L		M26x1.5	
RTH-2042-L	12	BSP1-1/4	
RTH-2030-L		M30x2.0	
RTH-2536-L	16	M36x2.0	

Straight and Turbo Buffles

TYPE SBM / TBM 



Straight Baffle



Turbo Baffle



Please kindly add "T" at the end of the product code for Pre-Sealed Thread
Example Code: TBM 10-100T

Straight and Turbo Buffles

TYPE SBM / TBM 

Order No / Bestellnr.		Ød	Ød1	L	L1	L2	L3	L4	H	S	SW
Straight Baffle	Turbo Baffle										
SBM 10-100	TBM 10-100	BSP 1/8	8.5	100	8	8	10	50	8.5	1.6	5
SBM 10-200	TBM 10-200	BSP 1/8	8.5	200	8	8	10	100	8.5	1.6	5
SBM 13-125	TBM 13-125	BSP 1/4	11.5	125	10	11	13	50	11.5	2.4	7
SBM 13-250	TBM 13-250	BSP 1/4	11.5	250	10	11	13	100	11.5	2.4	7
SBM 17-150	TBM 17-150	BSP 3/8	15	150	10	15	17	50	15	2.4	8
SBM 17-300	TBM 17-300	BSP 3/8	15	300	10	15	17	100	15	2.4	8
SBM 21-200	TBM 21-200	BSP 1/2	18.5	200	10	18	20	75	18.5	2.4	10
SBM 21-400	TBM 21-400	BSP 1/2	18.5	400	10	18	20	125	18.5	2.4	10
SBM 26-300	TBM 26-300	BSP 3/4	23.5	300	12	23	25	100	23.5	3.2	12
SBM 26-500	TBM 26-500	BSP 3/4	23.5	500	12	23	25	150	23.5	3.2	12
SBM 08075-100	TBM 08075-100	M8x0.75	6	100	8	6	8	50	6	1.6	4
SBM 08075-200	TBM 08075-200	M8x0.75	6	200	8	6	8	100	6	1.6	4
SBM 1010-100	TBM 1010-100	M10x1.0	8	100	8	8	10	50	8	1.6	5
SBM 1010-200	TBM 1010-200	M10x1.0	8	200	8	8	10	100	8	1.6	5
SBM 1215-125	TBM 1215-125	M12x1.5	10	125	8	10	12	50	10	2.4	6
SBM 1215-250	TBM 1215-250	M12x1.5	10	250	8	10	12	100	10	2.4	6
SBM 1415-150	TBM 1415-150	M14x1.5	12	150	10	12	14	50	12	2.4	6
SBM 1415-300	TBM 1415-300	M14x1.5	12	300	10	12	14	100	12	2.4	6
SBM 1615-150	TBM 1615-150	M16x1.5	14	150	10	14	16	50	14	2.4	8
SBM 1615-300	TBM 1615-300	M16x1.5	14	300	10	14	16	100	14	2.4	8
SBM 1815-150	TBM 1815-150	M18x1.5	16	150	10	16	18	50	16	2.4	8
SBM 1815-300	TBM 1815-300	M18x1.5	16	300	10	16	18	100	16	2.4	8
SBM 2015-150	TBM 2015-150	M20x1.5	18	150	10	18	20	50	18	2.4	10
SBM 2015-300	TBM 2015-300	M20x1.5	18	300	10	18	20	100	18	2.4	10
SBM 2420-150	TBM 2420-150	M24x2.0	20	150	12	20	22	50	20	3.2	12
SBM 2420-300	TBM 2420-300	M24x2.0	20	300	12	20	22	100	20	3.2	12



Technical Details

- Required air pressure : 4-6 bars
- Hose Length : 10 meters
- Cleaning tank volume : 50 liters
- Max. Flow rate : 28 l/min
- Cleaning Solution : Water and Special Solution
- Dimensions : 900 x 600 x 850 mm (H x W x D)
- Weight : 50 kg

Technische Details

- Druckbedarf : 4-6 bar
- Schlauchlänge : 10 meter
- Behälterkapazität : 50 Liter
- Max. Durchfluss : 28 l/min
- Reinigungsflüssigkeit : Wasser und Speziallösung
- Dimensionen : 900 x 600 x 850 mm (H x W x D)
- Gewicht : 50 kg

Main Advantages

- Cleaning the channels **Without Disassembling** the mold.
- Does not require **ELECTRICITY!**
- Works with pressurized **AIR**.
- Uses **Cleaning & Protecting** solutions.
- Keeps and protects the mold channels **Cleaner**.
- Improves the **Productivity**.
- Ergonomic and compact **Design**.
- **User Friendly** control panel.

Hauptvorteile

- Spülen/Reinigen der Kühlkanäle ohne das Abmotieren des Werkzeugs.
- Kein **STROM** erforderlich!
- Wird mit **Druckluft** betrieben.
- Arbeitet mit **Reinigungs- und Korrosionsschutzmitteln**.
- Reinigt und schützt die Kühlkanäle.
- Erhöht die **Produktivität**.
- Ergonomisches und kompaktes **Design**.
- **Benutzerfreundliche** Bedientafel.

Working Principle

- The Solutions should be run in 3 steps.
 1. Cleaning Solution : Dissolves and removes **Rust and Lime** from the inner channels from
 2. Neutraliser Solution : Neutralizes the cleaning solution and **Adjusts** the **pH** level of the channels.
 3. Protection Solution : To Prevent the channels from Rust and Lime and to build-up cleaner system.

Arbeitsweise

- In 3 Schritten:
 1. Reinigung : Spülen und Reinigen der Kühlkanäle von **Kalk und sonstigen Ablagerungen**.
 2. Neutralisierung : **Reinigen** der Kühlkanäle vom Reinigungsmittel und Überwachung des pH-Wertes.
 3. Schutz : Korrosions- und Langzeitschutz gegen Rost und Ablagerungen, um ein einwandfreies Kühlen der Wärme übertragenden Flächen zu gewährleisten



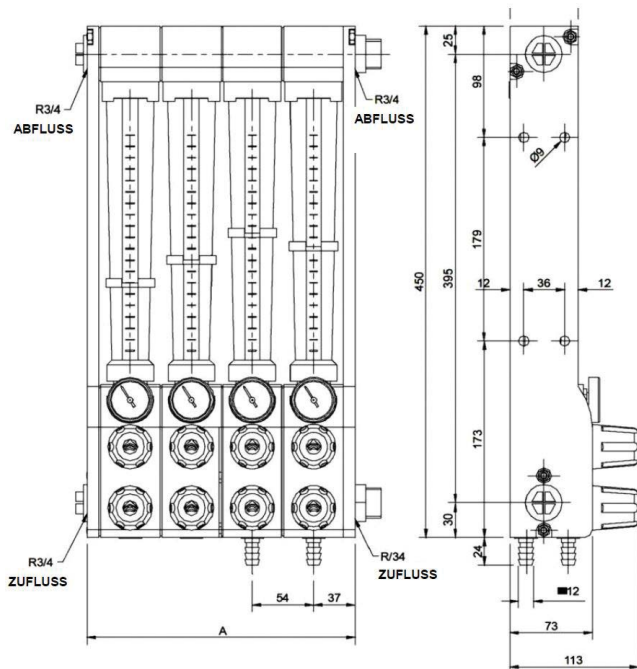
Main Technical Features

- Tube made of polyamide (Standard)
- Bodies made of PA 6 with 30% fiberglass
- Regulating Taps in brass
- Thermometer (Standard)
- Vitrilic rubber o-rings in vitrilo (hardness 70 SHA)
- Brass inlet and outlet valves are inserted in the body 3/8"
- Maximum working temperature 90°C

Technische Einzelheiten

- Schaugrohr Polyamid standardmäßig
- Gehäusekörper Polyamid verstärkt mit 30% GF
- Vor- und Rücklaufventile aus Messing
- Thermometer standardmäßig
- Innen-Zugstangen aus VA-Stahl
- Dichtungsringe 70 Shore
- Anschlussstülen 3/8" bsp aus Messing
- Temperaturbeständig bis 90°C

Water Flow Regulator - Wasserdurchflussregler



Order No for ZR Type/ Bestellnr. für ZR Typ	Order No for ZS Type/ Bestellnr. für ZS Typ	No of Entrance Eingangnr.	A (mm)
WFR 01-ZR	WFR 01-ZS	1	73
WFR 02-ZR	WFR 02-ZS	2	126
WFR 03-ZR	WFR 03-ZS	3	179
WFR 04-ZR	WFR 04-ZS	4	231
WFR 05-ZR	WFR 05-ZS	5	284
WFR 06-ZR	WFR 06-ZS	6	339
WFR 07-ZR	WFR 07-ZS	7	392
WFR 08-ZR	WFR 08-ZS	8	444
WFR 09-ZR	WFR 09-ZS	9	497
WFR 10-ZR	WFR 10-ZS	10	552
WFR 11-ZR	WFR 11-ZS	11	607
WFR 12-ZR	WFR 12-ZS	12	659

ZR Type
Female Thread
Innengewinde



ZS Type
Hose Plug
Schläuche Nippel





orca 120

wartungsfrei – berührungslos – leicht zu bedienen

Das neu entwickelte Orca Temperiersystem zeichnet sich durch ein hohes Maß an Flexibilität und Überwachung Ihrer Fertigungsprozesse aus. Sie können zwischen 4 und 120 Prozesskreise temperieren und überwachen.

Das System ist kombinierbar mit ferngesteuerten Temperiergeräten, welche wir Ihnen auf Wunsch anbieten.

maintenance-free – contactless – easy to operate

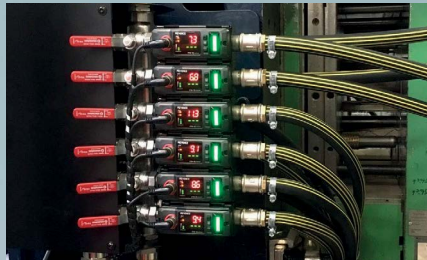
The newly developed Orca Temperature System features high levels of flexibility and offers complete monitoring of your manufacturing processes. You can temper between 4 and 120 different process channels.

The system is easily compatible with a remote-controlled tempering device, which we could also supply you with.

	orca 120	orca 160
Steuerung <i>Control Unit</i>	B&R ORCA 4.0	B&R ORCA 4.0
Medientemperatur <i>Temperature of medium</i>	Wasser / Öl bis 120°C Water/Oil up to 120°	Wasser / Öl bis 160°C Water/Oil up to 160°
Anzahl Kreise min/max <i>Number of channels min/max</i>	4 - 120	1- 120
Durchflussmessung <i>Flow measurement</i>	Doppel-Ultraschall-Sensor <i>Double Ultrasonic Sensor</i> 1 - 100 l/min konfigurierbar <i>1-100l/min configurable</i>	Schrägsitz-Sensor <i>Angle Seat Sensor</i> 1 - 30 l/min konfigurierbar <i>1-30l/min configurable</i>
Temperaturmessung <i>Temperature measurement</i>	PT 100	PT 100
Hardware <i>Hardware</i>	Kugelhahn in Vor- und Rücklauf <i>Ball Valve inlet and outlet</i> Verteilerleisten Edelstahl <i>Distribution bar Stainless-Steel</i> Sammelvor- und Rücklauf jeweils Innengewinde 1" <i>Collection inlet and outlet in each case with internal thread 1"</i> Werkzeugvor- und Rücklauf: Innengewinde ½" <i>Mold inlet and outlet: Internal thread ½"</i>	Kugelhahn in Vor- und Rücklauf <i>Ball Valve inlet and outlet</i> Verteilerleisten Edelstahl <i>Distribution bar Stainless-Steel</i> Sammelvor- und Rücklauf jeweils Innengewinde 1" <i>Collection inlet and outlet in each case with internal thread 1"</i> Werkzeugvor- und Rücklauf: Innengewinde ½" <i>Mold inlet and outlet: Internal thread ½"</i>
Temperaturbeständigkeit <i>Temperature resistance</i>	< 120°C	< 160°C
Druckbereich <i>Pressure range</i>	< 15 bar	< 15 bar
Überwachung <i>Monitoring</i>	komplett mit 7" Touchscreen <i>Complete monitoring with 7" Touchscreen</i>	komplett mit 7" Touchscreen <i>Complete monitoring with 7" Touchscreen</i>
Datenmanagement <i>Data management</i>	Datenspeicherung für mehr als 200 Werkzeugdatensätze <i>Data storage for more than 200 mold data sets</i> Schnittstellen <i>Interface:</i> Ethernet, I/O-Link, CAN (RS232 & RS485) USB 2.0	Datenspeicherung für mehr als 200 Werkzeugdatensätze <i>Data storage for more than 200 mold data sets</i> Schnittstellen <i>Interface:</i> Ethernet, I/O-Link, CAN (RS232 & RS485) USB 2.0



orca 120



orca 120

AKTIV: extruder_12.xml Jurke 16:45
ENGINEERING 26.04.2016

ÜBERWACHUNG

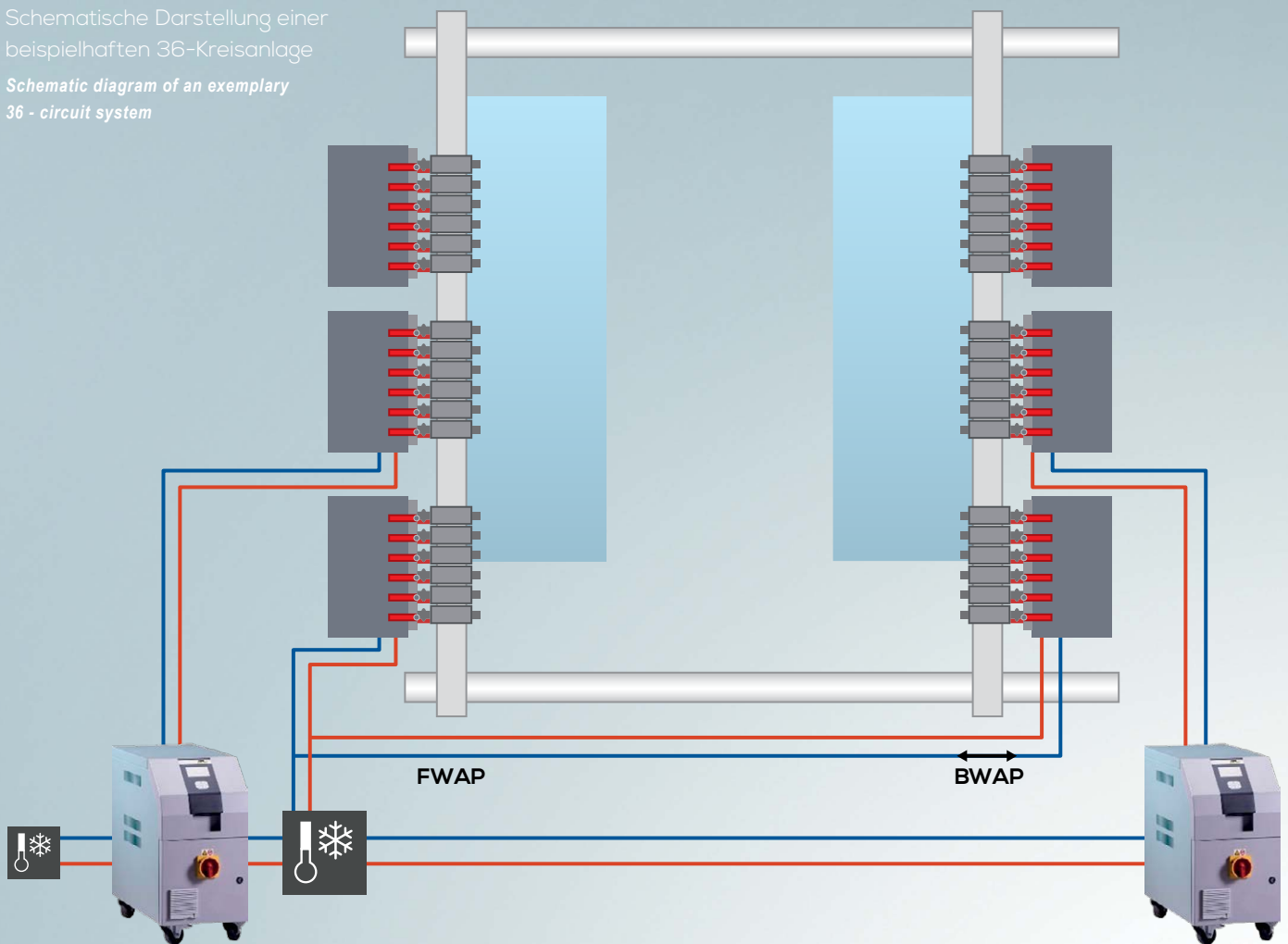
Blocklabel	1	2	3	4	5	6
Kreis	1	2	3	4	5	6
l/min	4,8	4,8	4,8	4,8	4,8	4,8
°C	79	79	79	79	79	79
Blocklabel	1	2	3	4		
Kreis	1	2	3	4		
gal/min	4,8	4,8	4,8	4,8		
°F	79	79	79	79		
Blocklabel	1	2	3	4	5	6
Kreis	1	2	3	4	5	6
l/min	4,8	4,8	4,8	4,8	4,8	4,8
°C	79	79	79	79	79	79

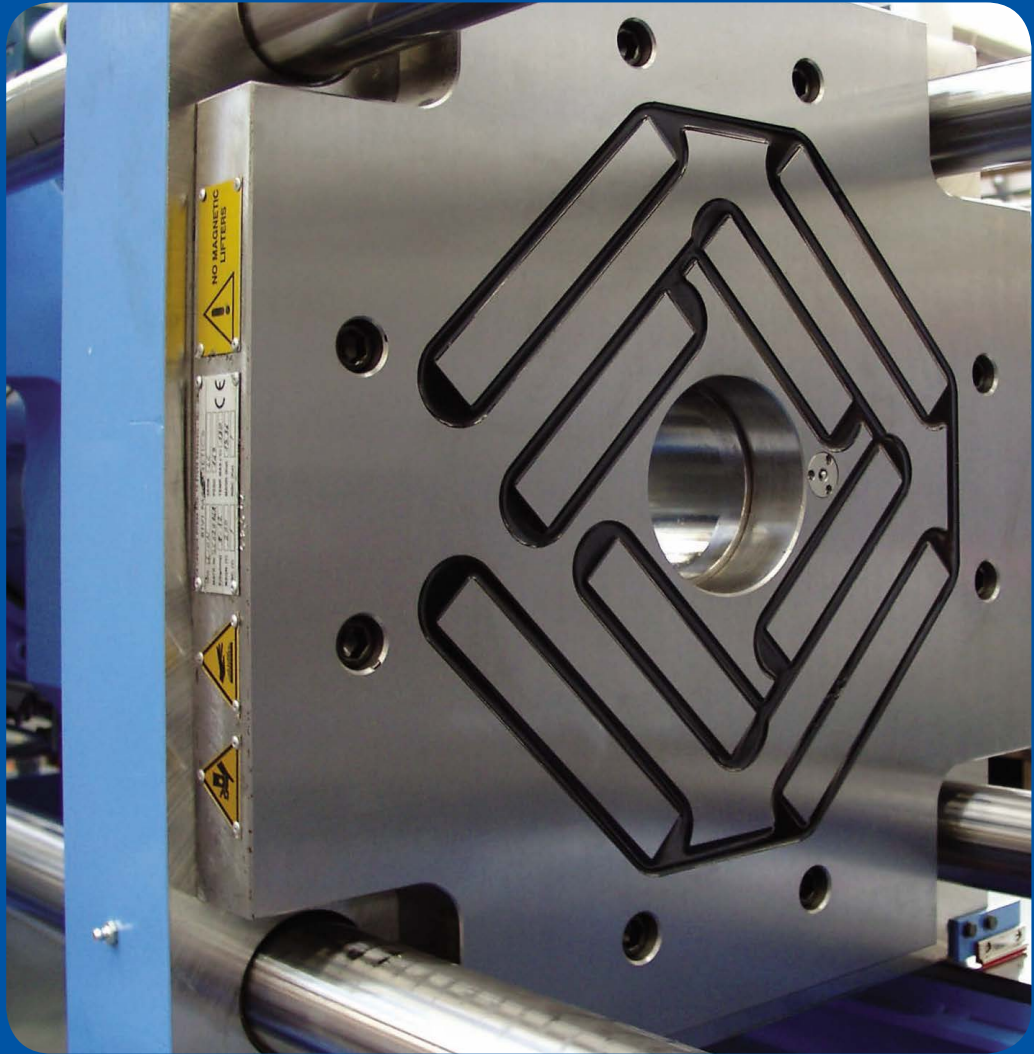
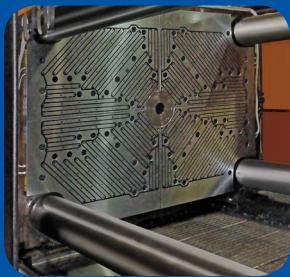
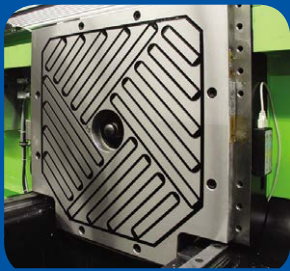
Admin

orca Interface

Schematische Darstellung einer beispielhaften 36-Kreisanlage

Schematic diagram of an exemplary 36 - circuit system





rtc TYPE MAG-TEX 130

The quick mold change system for thermoplastics. Stable up to 130°C

Das Schnellwechselsystem für Thermoplaste. Temperaturstabil bis 130°C

Technical Specifications - Technische Daten

Für Pressen und Spritzpressen
Aller Größe, vertikal und horizontal.

For Injection and transfer molding
All sizes, both vertically and horizontally.

Max. Temperature / Max. Temperatur	130°C
Magnetic Field / Spez. Magnetkraft	18 kg/cm ²
Effective Magnetic F. / Effektive Magnetkraft	5-12 kg/cm ²
Mag. Penetration Depth / Magn. Eindringtiefe	15-20 mm
Plate Thickness / Plattendicke	47 mm
Fastening / Befestigung	nach Euromap

rtc TYPE MAG-TEX 240

The quick mold change system for thermoplastics. Stable up to 240°C

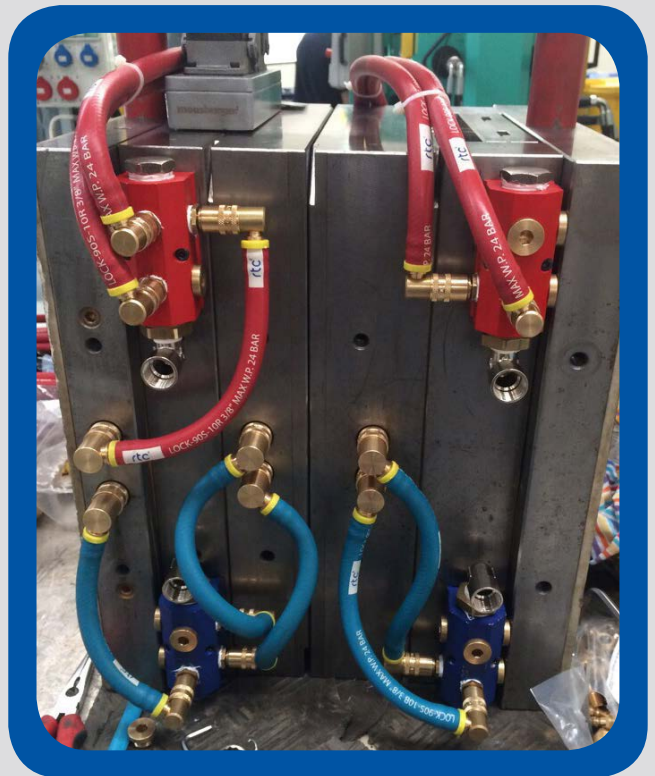
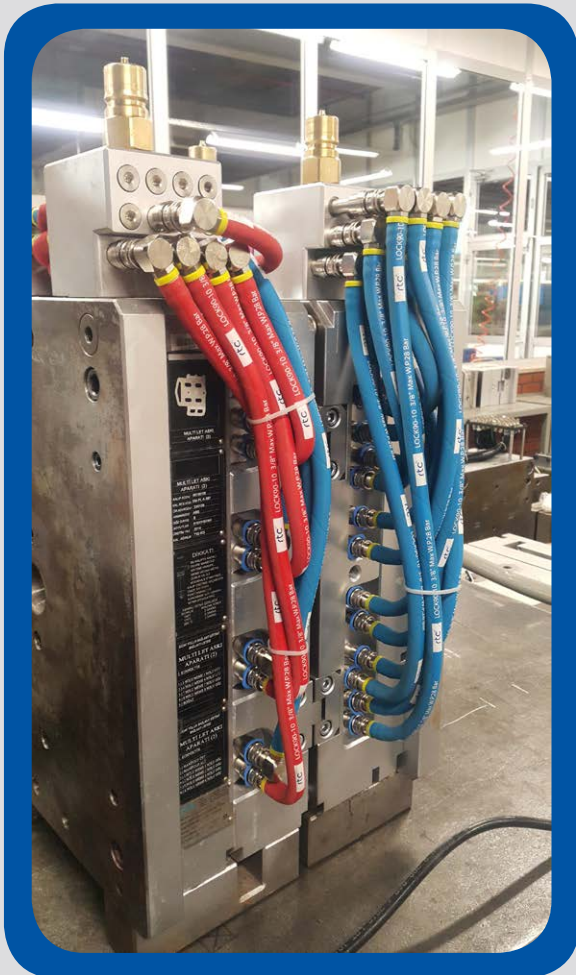
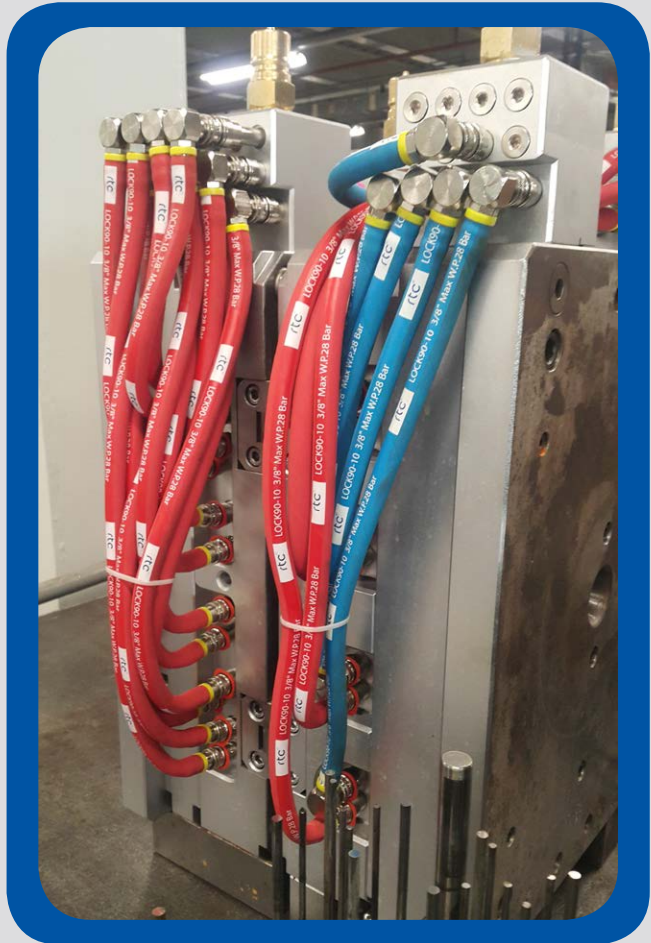
Das Schnellwechselsystem für Thermoplaste. Temperaturstabil bis 240°C

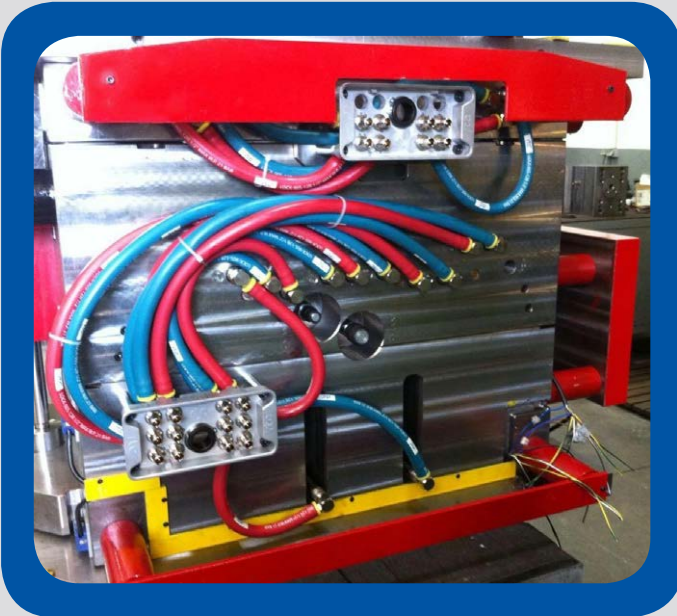
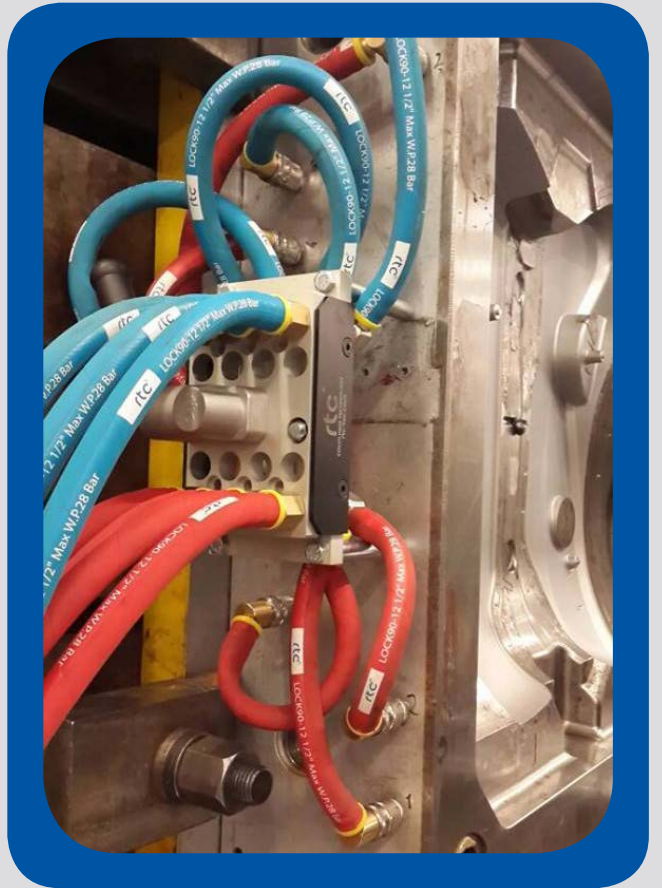
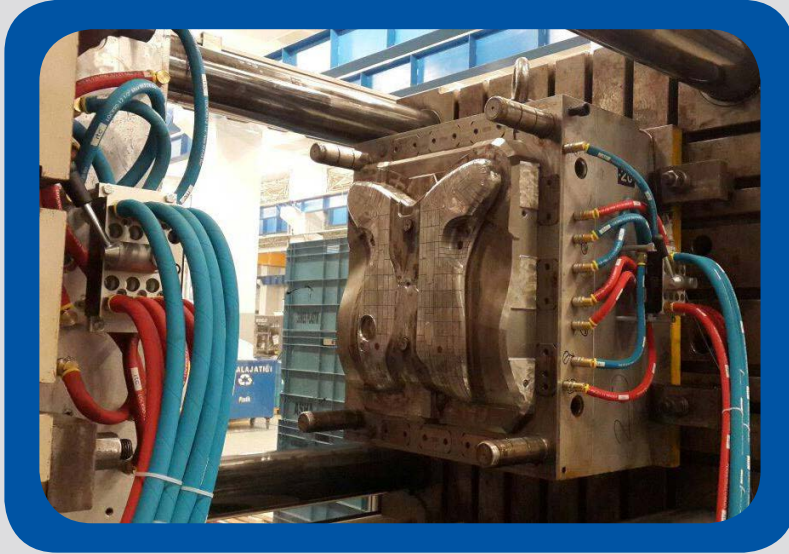
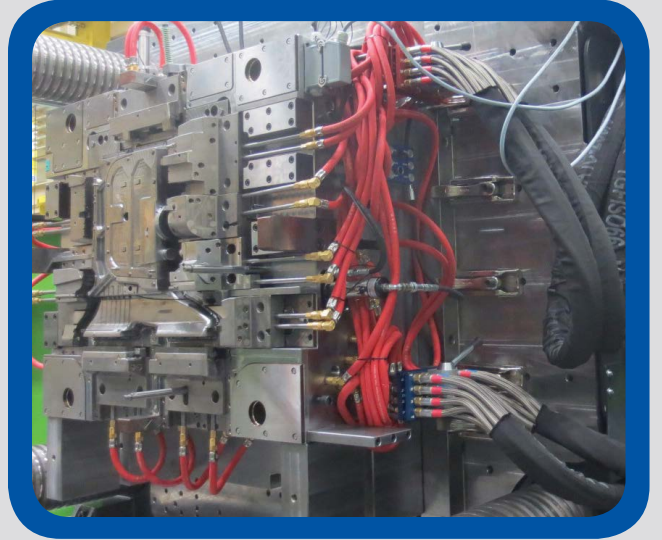
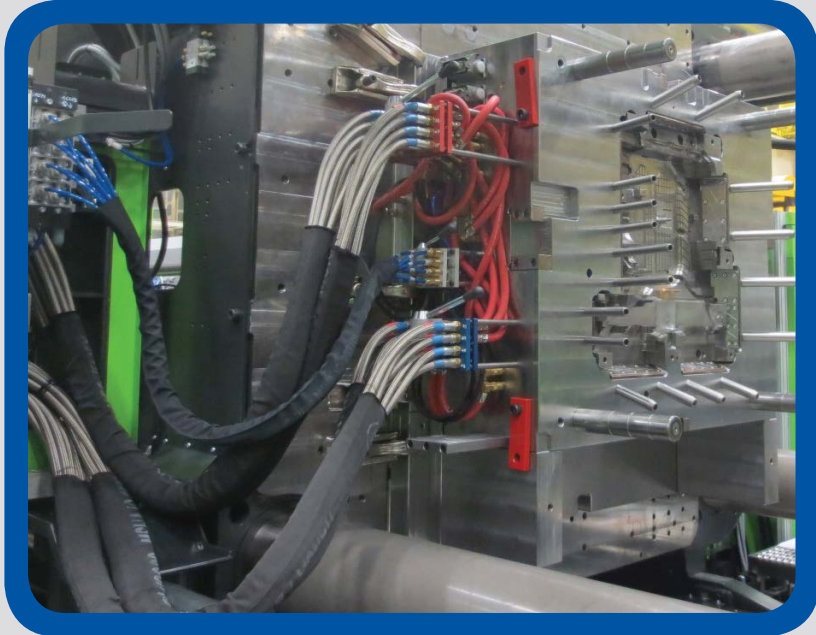
Technical Specifications - Technische Daten

Lieferbar für Maschinen von 300kN bis 50.000 kN.
Größere Systeme auf Anfrage.
Mit und ohne Heizung

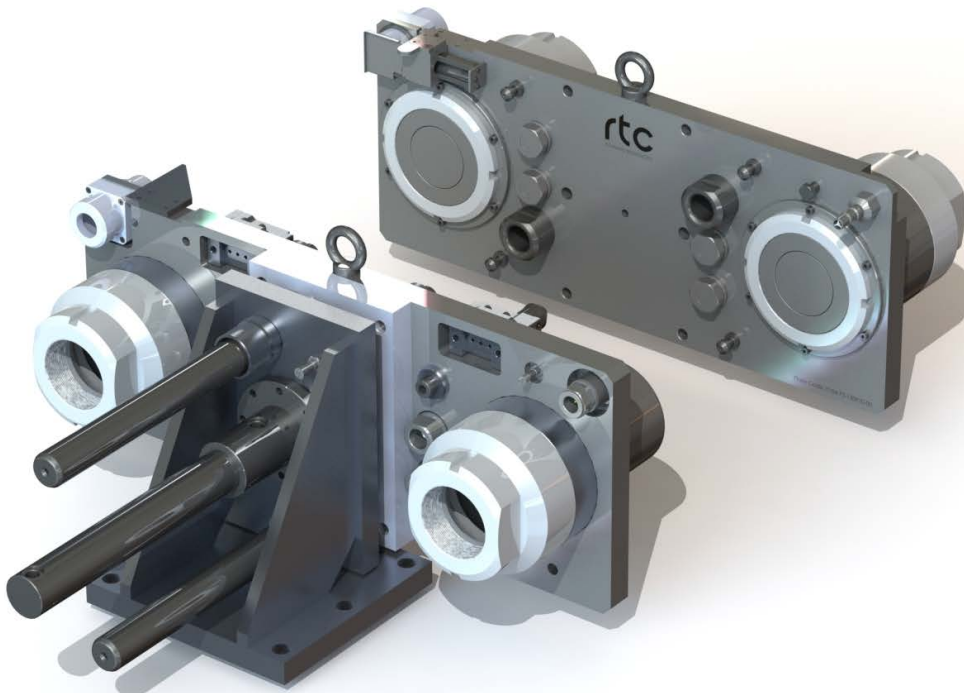
This can be used from 300kN to 50,000kN injection machines.
For larger systems request is needed.
With or without heating.

Max. Temperature / Max. Temperatur	240°C
Magnetic Field / Spez. Magnetkraft	18 kg/cm ²
Effective Magnetic F. / Effektive Magnetkraft	5-12 kg/cm ²
Mag. Penetration Depth / Magn. Eindringtiefe	15-20 mm
Plate Thickness / Plattendicke	55 mm
Fastening / Befestigung	nach Euromap





rtc TYPE Customised Multi Coupling System

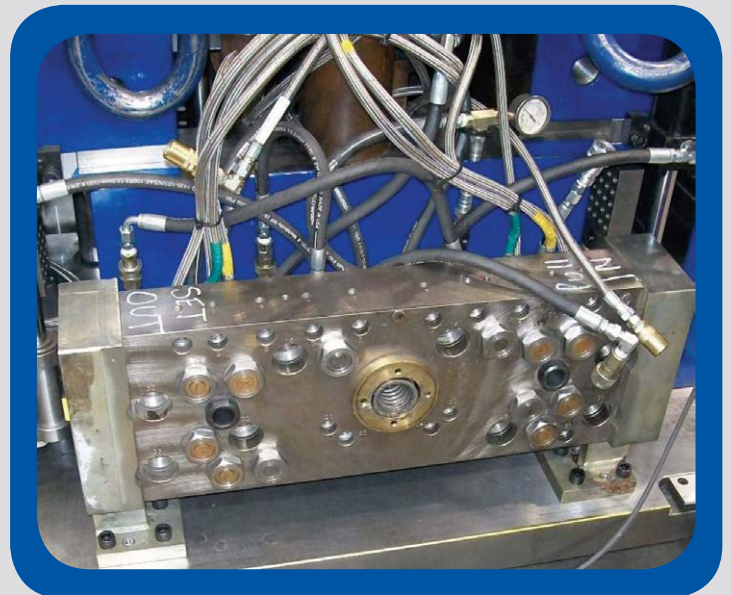
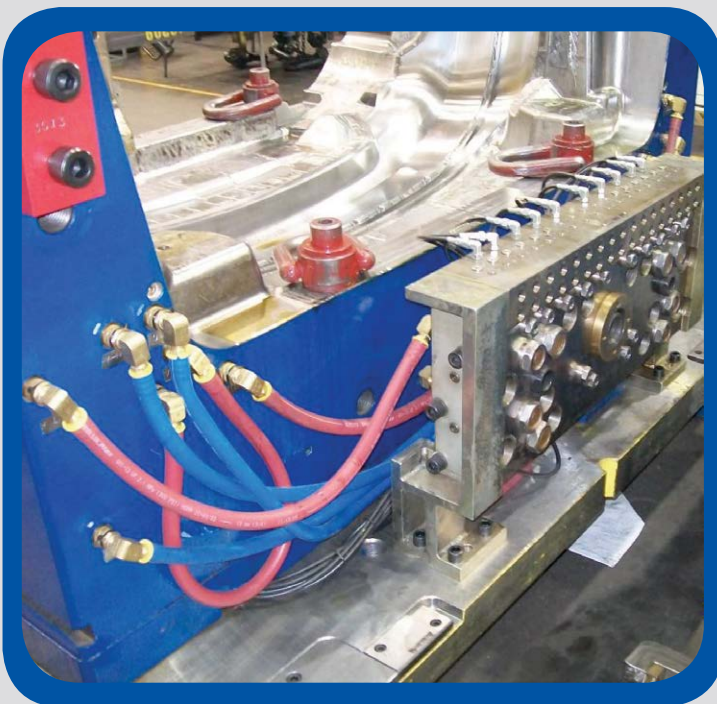


Customised Multi-Couplings
Sondermultikupplungen nach Kundenwunsch

Customised Multi-Couplings are specially designed according to the customer's needs.

All kinds of connections, such as, **Water**, Pneumatic, **Hydraulic** and **Electrical Connectors** can be mounted on the same plate, in order to minimise the mold changing time without any possible mistake.

Our Research & Development team provides the best solution to the end users, according to the specific inquiries.



Customised Mini-Connector / MiniSondermultikupplungen

All kinds of connections, such as, **Water**, **Pneumatic** and **Electrical Connectors** can be mounted on the same plate, in order to minimise the mold changing time without any possible mistake.

Für alle Arten der Verbindungen wie z.B. **Wasser**, **Pneumatik** oder **Elektrik** an einer Multikupplung.

Using Area - Einsatzbereiche

- Aviation - Luftfahrt
- Medical - Medizintechnik • Robotic - Roboter
- Automotive - Automotive
- Machinery - Maschinenbau
- Test and Measuring Devices - Test- und Prüfstände
- Compressed Air - Druckluft
- Signal Transmission - Signalübertragung

Valve type - Ventil Typ.

- Single Shut-off - Einseitig absperrend
- Free Flow - Nicht absperrend

Flow size - Nennweiten

3 mm - 4 mm - 6 mm

Max. Working Pressure - Betriebsdruck

15 bar (217 PSI)

Temperature Range - Temperaturbereich

Nitril (N) -20°C +80°C (-4°F +176°F)

Connections - Anschlüsse

2 / 4 / 6 / 8 / 12 / 16



rtc TYPE Swing Coupler



Self Venting Type
Sicherheits - Schnellkupplung

- The system perfectly fits to the **ISO 4414**, **EN 983** safety standards.
- Full flow, negligible loss of pressure
- Simple operation, no force required
- Compact design

Flow size - Nennweiten

3 mm - 1/8	rtc 461.03
5.5 mm - 1/4	rtc 460.06 / 461.06 / 462.06 / 466.06 / 467.06
8 mm - 3/8	rtc 460.08 / 461.08 / 463.08 / 464.08 / 465.08 / 468.08
11 mm - 1/2	rtc 460.11 / 461.11
19 mm - 3/4	rtc 461.19

Temperature Range - Temperaturbereich
-20°C +100°C (-4°F +212°F) Nitril (N)
-10°C +180°C (+14°F +356°F) FPM (V)

Max. Working Pressure - Betriebsdruck
25 bar (360 PSI)
15 bar (217 PSI) Connection / Disconnection



Double Shut-off Single Shut-off

PNEUMATIC

rtc TYPE Sleeve Twist Coupler



Self Venting Type
Sicherheits - Schnellkupplung

- The system perfectly fits to the **ISO 4414**, **EN 983** safety standards.
- Model to ISO 6150-C-10 and AFNOR: C-10 NF E 49-053
- Safety feature: 2-stage disconnection

Flow size - Nennweiten

5.5mm - 1/4	rtc 450.06
8mm - 3/8	rtc 450.08
11mm - 1/2	rtc 450.11
5.5mm - 1/4	rtc 451.06
8mm - 3/8	rtc 451.08
11mm - 1/2	rtc 451.11

Temperature Range - Temperaturbereich
-20°C +100°C (-4°F +212°F) Nitril (N)
-10°C +180°C (+14°F +356°F) FPM (V)

Max. Working Pressure - Betriebsdruck
25 bar (360 PSI)
15 bar (217 PSI) Connection / Disconnection



Double Shut-off Single Shut-off

PNEUMATIC

rtc TYPE Coded Coupler



Self Venting Type
Sicherheits - Schnellkupplung

- The system perfectly fits to the **ISO 4414**, **EN 983** safety standards.
- Model to ISO 6150-C-10 and AFNOR: C-10 NF E 49-053
- Safety feature: 2-stage disconnection

Flow size - Nennweiten

5.5mm - 1/4	rtc 452.06
-------------	------------

Temperature Range - Temperaturbereich
-20°C +100°C (-4°F +212°F) Nitril (N)
-10°C +180°C (+14°F +356°F) FPM (V)

Max. Working Pressure - Betriebsdruck
25 bar (360 PSI)
15 bar (217 PSI) Connection / Disconnection



Double Shut-off Single Shut-off

PNEUMATIC

rtc TYPE Heavy Duty



Self Venting Type
Sicherheits - Schnellkupplung

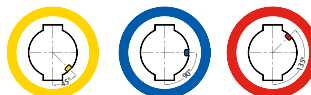
- The system perfectly fits to the **ISO 4414**, **EN 983** safety standards.
- Model to ISO 6150-C-10 and AFNOR: C-10 NF E 49-053
- Safety feature: 2-stage disconnection

Flow size - Nennweiten

11mm - 1/2	rtc 453.11
19mm - 3/4	rtc 453.19

Temperature Range - Temperaturbereich
-20°C +100°C (-4°F +212°F) Nitril (N)
-10°C +180°C (+14°F +356°F) FPM (V)

Max. Working Pressure - Betriebsdruck
25 bar (360 PSI)
15 bar (217 PSI) Connection / Disconnection



Double Shut-off Single Shut-off

PNEUMATIC

Compatible - Kompatibilität
For Full-Flow and Single Shut-off
Rectus 20
Walther 06-003

For Double Shut-off
Rectus 20KB
Walther 06-003

Temperature Range - Temperaturbereich
-20°C +100°C (-4°F +212°F) Nitril (N)

Max.Working Pressure - Max. Betriebsdruck
35 bar (510 PSI)

Flow size - Nennweiten
rtc type 020 2.7 mm

TYPE 020 **rtc**



WATER
PNEUMATIC

Compatible - Kompatibilität
For Full-Flow and Single Shut-off
Rectus 21
Camozzi

For Double Shut-off
Rectus 21KB

Temperature Range - Temperaturbereich
-20°C +100°C (-4°F +212°F) Nitril (N)

Max.Working Pressure - Max. Betriebsdruck
35 bar (510 PSI)

Flow size - Nennweiten
rtc type 021 5 mm

TYPE 021 **rtc**



WATER
PNEUMATIC

Compatible - Kompatibilität
rtc 462.06
AMFLO C38
ARO 210
Cejn 300
Foster 210
Parker B53
Rectus 14 & 22

Temperature Range - Temperaturbereich
-20°C +100°C (-4°F +212°F) Nitril (N)

Max.Working Pressure - Max. Betriebsdruck
35 bar (510 PSI)

Flow size - Nennweiten
rtc type 022 5.5 mm

TYPE 022 **rtc**



PNEUMATIC

Compatible - Kompatibilität
US (Industrial) MIL-C-4109 1/4
ISO 6150-B-12

rtc 460.06
Hansen 1000
Cejn 310
Foster 3003
Parker B23
Rectus 23 & 24

Temperature Range - Temperaturbereich
-20°C +100°C (-4°F +212°F) Nitril (N)

Max.Working Pressure - Max. Betriebsdruck
35 bar (510 PSI)

Flow size - Nennweiten
rtc type 023 5.5 mm

TYPE 023 **rtc**



PNEUMATIC

rtc TYPE 025



Compatible - Kompatibilität

For Full-Flow and Single Shut-off

For Double Shut-off

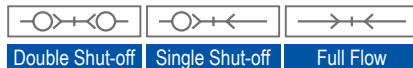
rtc 463.08
026
Rectus 25 & 26
Cejn 320

Rectus 25KB & 26KB

Temperature Range - Temperaturbereich
-20°C +100°C (-4°F +212°F) Nitril (N)

Max.Working Pressure - Max. Betriebsdruck
35 bar (510 PSI)

Flow size - Nennweiten
rtc type 025 7.8 mm



Double Shut-off Single Shut-off Full Flow

PNEUMATIC

rtc TYPE 026



Compatible - Kompatibilität

For Full-Flow and Single Shut-off

For Double Shut-off

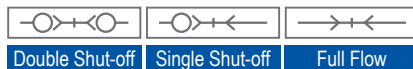
rtc 463.08
025
Rectus 25 & 26
Cejn 320

Rectus 25KB & 26KB

Temperature Range - Temperaturbereich
-20°C +100°C (-4°F +212°F) Nitril (N)

Max.Working Pressure - Max. Betriebsdruck
35 bar (510 PSI)

Flow size - Nennweiten
rtc type 026 7.2 mm



Double Shut-off Single Shut-off Full Flow

PNEUMATIC

rtc TYPE 027



Compatible - Kompatibilität

For Full-Flow and Single Shut-off

For Double Shut-off

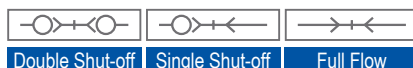
Rectus 27
Cejn 410
Tema 1700

Rectus 27KB

Temperature Range - Temperaturbereich
-20°C +100°C (-4°F +212°F) Nitril (N)

Max.Working Pressure - Max. Betriebsdruck
35 bar (510 PSI)

Flow size - Nennweiten
rtc type 027 10 mm



Double Shut-off Single Shut-off Full Flow

PNEUMATIC

rtc TYPE 053



Compatible - Kompatibilität - Muadil

Nitto Kohki TSP

Temperature Range - Temperaturbereich - Sıcaklık Aralığı

-20°C +100°C (-4°F +212°F) Nitril (N)
-10°C +180°C (+14°F +356°F) FPM (V)

Max.Working Pressure - Max. Betriebsdruck - Max. Çalışma Basıncı
30 - 50 bar (435 - 725 PSI) - For brass
45 - 100 bar (650 - 1.450 PSI) - Stainless Steel

Flow size - Nennweiten - Akış Çapı

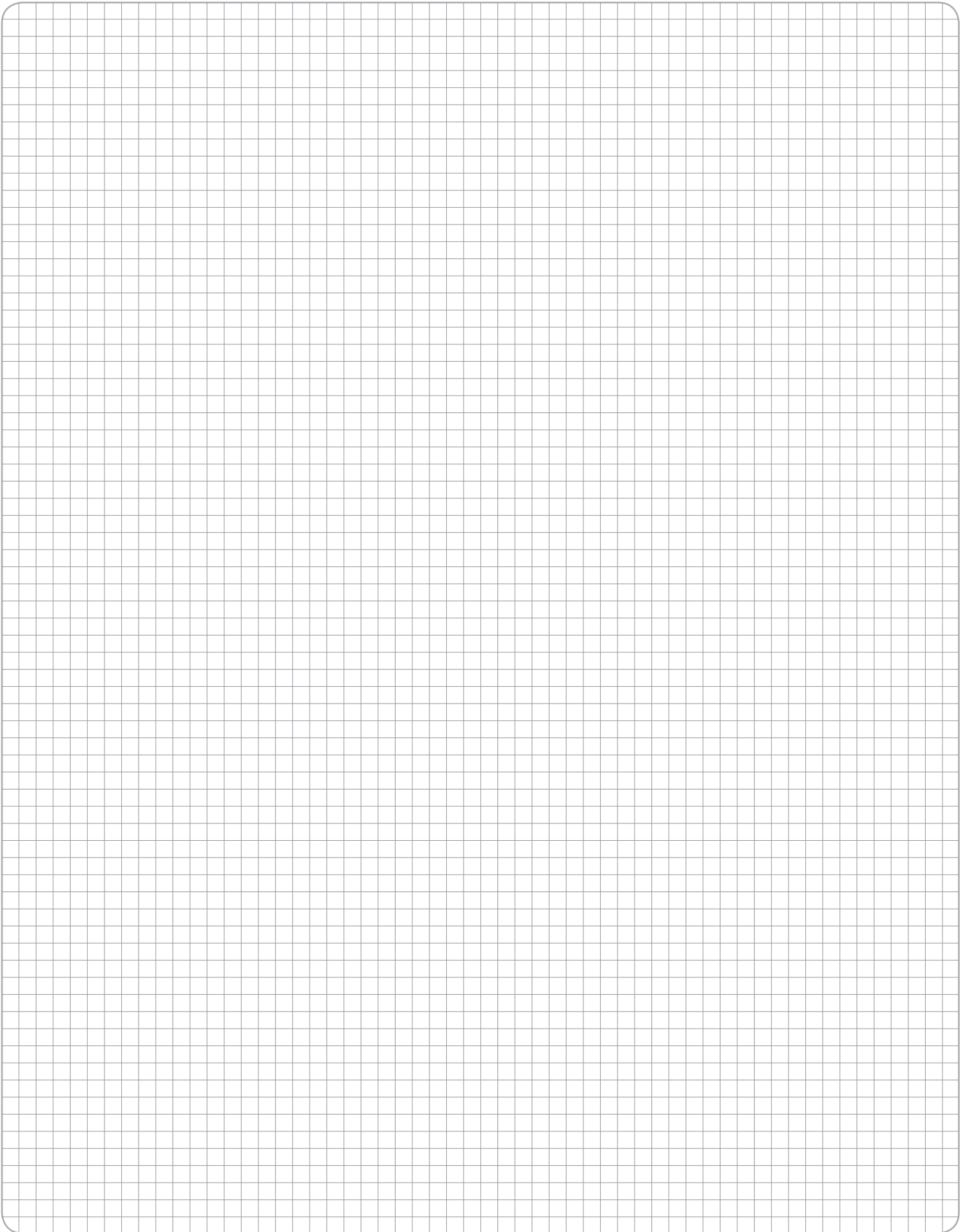
rtc type 053.06 6 mm
rtc type 053.10 10 mm
rtc type 053.13 13 mm
rtc type 053.19 19 mm
rtc type 053.25 25 mm



Full Flow

WATER
PNEUMATIC
HYDRAULIC

A large grid area for taking notes, consisting of a 30x30 grid of small squares. The grid is centered on the page and occupies most of the page area. The lines are thin and grey, creating a clean and professional appearance.



A large grid area for taking notes, consisting of a 30x30 grid of small squares. The grid is centered on the page and occupies most of the page area. The lines are thin and grey.